

Catalog Number H250 & H600 Series Catalog Number R250 & R600 Series

CLASS H(K) AND R FUSEBLOCKS:

H250 & H600 Series: For use with Class H and K5 Fuses
(Edison KON and ERN, H250;
Edison KOS and ERS, H600)

R250 & R600 Series: For use with Class R Fuses
(Edison LENRK and ECNR, R250;
Edison LESRK and ECSR, R600)

Construction: Thermoplastic, UL Flammability; 94VO

Ampere Ratings: 1/10-600 Amps

Voltage Ratings: H250, 250 Volts AC; H600,
600 Volts AC; R250, 250 Volts AC; R600, 600 Volts AC

Agency Approvals:

UL Listed, Guide IZLT, File E14853
CSA, Class 6225-01, File 47235

Dimensional Data 250V, 1/10A to 30A

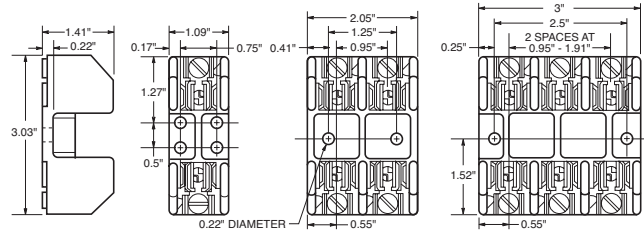


FIGURE 1.

FIGURE 2.

FIGURE 3.

Class H Fuseblocks (250V & 600V) Catalog Data

Amps	Poles	Basic Catalog Number	Terminal Type (Suffix No.)						Dimensions (Inches)													
			Screw			Box Lug			Fig. No.	A	B	C	D	E	F	G	H	J Dia. x C' Bore	K	Max. Wire Size		
			Clip with Reinforced Spring	Pressure Plate	Pressure Plate & Clip with Reinforced Spring	Clip with Reinforced Spring	Clip with Reinforced Spring (Copper Only)															
KON, ERN, PONC, and CDNC																						
1/10	1	H25030-1	S	SR	P	PR	C	CR	COR	1	(See Figures)											S.P. #10 Cu C #6Cu
to	2	H25030-2	S	SR	P	PR	C	CR	COR	2	(See Figures)											
30	3	H25030-3	S	SR	P	PR	C	CR	COR	3	(See Figures)											
31	1	H25060-1	S*	SR*	P*	PR*	C	CR	COR	4	(See Figures)											
to	2	H25060-2	S*	SR*	P*	PR*	C	CR	COR	5	4.25	1.73	2.81	1.5	0.5	0.5	1.25	1.94	0.22 x 0.41	0.27	S.P. #10 #2Cu-Al	
60	3	H25060-3	S*	SR*	P*	PR*	C	CR	COR	6	(See Figures)											
61	1	H25100-1	—	SR*	—	—	—	CR	COR	7	(See Figures)											
to	2	H25100-2	—	SR*	—	—	—	CR	COR	8	(See Figures)											#1/0 Cu-Al
100	3	H25100-3	—	SR*	—	—	—	CR	COR	9	(See Figures)											
to	200	H25200-1	—	—	—	—	—	CR	—	10	7.125	3.09	3.0	2.06	0.5	2.0	3.0	0.75	—	0.31	250MCM Cu-Al	
		H25200-3	—	—	—	—	—	CR	—	10	9.06	4.0	3.0	3.02	0.63	1.75	3.0	1.0	—	0.31	500MCM Cu-Al	
to	400	H25400-1	—	—	—	—	—	CR*	—	10	11.0	4.97	3.0	4.0	1.125	1.75	4.0	1.02	—	0.31	2-500MCM Cu-Al	
to	600	H25600-1	—	—	—	—	—	CR	—	10	(See Figures)											
KOS, ERS, and CDSC																						
1/10	1	H60030-1	S	SR	P	PR	C	CR	COR	4	(See Figures)											S.P. #10 Cu C #6 Cu
to	2	H60030-2	S	SR	P	PR	C	CR	COR	5	6.25	1.73	2.89	1.56	0.25	0.63	3.125	1.56	0.28 x 0.5	0.27		
30	3	H60030-3	S	SR	P	PR	C	CR	COR	6	(See Figures)											
31	1	H60060-1	S	SR	P	PR	C	CR	COR	7	(See Figures)											
to	2	H60060-2	S	SR	P	PR	C	CR	COR	8	(See Figures)											#2 Cu-Al
60	3	H60060-3	S	SR	P	PR	C	CR	COR	9	(See Figures)											
61	1	H60100-1	—	—	—	—	—	CR	COR	10	(See Figures)											
to	2	H60100-2	—	—	—	—	—	CR	COR	5	9.5	2.38	4.03	2.63	0.67	0.88	4.25	1.69	0.28 x 0.5	0.34	#1/0 Cu-Al	
100	3	H60100-3	—	—	—	—	—	CR	COR	6	(See Figures)											
to	200	H60200-1	—	—	—	—	—	CR	COR*	10	9.63	3.09	3.0	3.31	0.5	2.0	3.0	0.75	—	0.31	250 MCM Cu-Al	
to	400	H60400-1	—	—	—	—	—	CR	COR*	10	12.0	4.0	3.0	4.5	0.63	1.75	3.0	1.0	—	0.56	500 MCM Cu-Al	
to	600	H60600-1	—	—	—	—	—	CR	—	10	14.0	4.97	3.0	5.5	1.125	1.75	4.0	1.0	—	0.56	2-500 MCM Cu-Al	

*UL Recognized, No CSA Certification.

Dimensional Data

250V, 31A to 60A; 600V, 1/10 to 30A and 61 to 100A

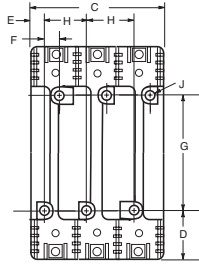
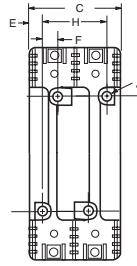
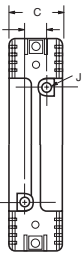
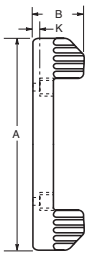


FIGURE 4.

FIGURE 5.

FIGURE 6.

250V, 61A to 100A; 600V, 31A to 100A

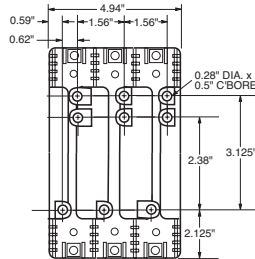
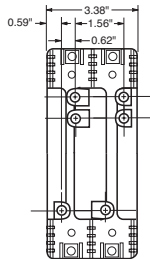
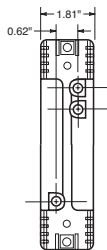
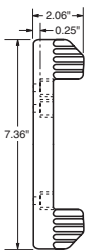


FIGURE 7.

FIGURE 8.

FIGURE 9.

250V, 101A to 600A; 600V, 101A to 600A

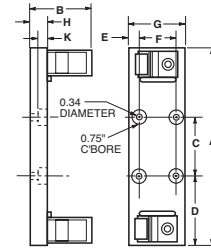


FIGURE 10.

Class R Fuseblocks (250V & 600V) Catalog Data

Amps	Poles	Basic Catalog Number	Terminal Type (Suffix No.)				Dimensions (Inches)											Max. Wire Size
			Screw		Box Lug		Fig. No.	A	B	C	D	E	F	G	H	J Dia. x C' Bore	K	
			Pressure Plate	Clip Cu Only														
ECNR, LENRK, and NCLR																		
1/10	1	R25030-1	SR	PR	CR	COR	1											S.P. #10 Cu
to	2	R25030-2	SR	PR	CR	COR	2											C #2 Cu
30	3	R25030-3	SR	PR	CR	COR	3											
31	1	R25060-1	SR*	PR	CR	COR	4											
to	2	R25060-2	SR*	PR	CR	COR	5	4.25	1.73	1.5	1.5	0.50	0.5	1.25	1.94	0.22 x 0.41	0.27	S.P. #10 Cu
60	3	R25060-3	SR*	PR	CR	COR	6			4.125								C #2 Cu-Al
61	1	R25100-1	—	—	—	—	7											
to	2	R25100-2	—	—	—	—	8											
100	3	R25100-3	—	—	—	—	9											#1/0 Cu-Al
to	1	R25200-1	—	—	—	—	10	7.125	3.09	3.0	2.06	0.5	2.0	3.0	0.75	—	0.31	250MCM Cu-Al
	3	R25200-3	—	—	—	—												
to	400	R25400-1	—	—	—	—	10	9.06	4.0	3.0	3.02	0.63	1.75	3.0	1.0	—	0.31	500MCM Cu-Al
to	600	R25600-1	—	—	—	—	10	11.0	4.97	3.0	4.0	1.125	1.75	4.0	1.0	—	0.31	2-500MCM Cu-Al
ECSR, LESRK, and SCLR																		
1/10	1	R60030-1	SR	PR	CR	COR	4											
to	2	R60030-2	SR	PR	CR	COR	5	6.25	1.73	1.55	1.56	0.25	0.63	3.125	1.56	0.28 x 0.5	0.27	S.P. #10 Cu
30	3	R60030-3	SR	PR	CR	COR	6			2.89								C #6 Cu-Al
31	1	R60060-1	SR*	PR	CR	COR	7			4.25								
to	2	R60060-2	SR*	PR	CR	COR	8											
60	3	R60060-3	SR*	PR	CR	COR	9											C #2 Cu-Al
61	1	R60100-1	—	—	—	—	10											
to	2	R60100-2	—	—	—	—	5	9.5	2.38	4.03	2.63	0.67	0.88	4.25	1.81	0.28 x 0.5	0.34	#1/0 Cu-Al
100	3	R60100-3	—	—	—	—	6											
to	200	R60200-1	—	—	—	—	10	9.63	3.15	3.0	3.31	0.5	2.0	3.0	0.75	—	0.31	250 MCM Cu-Al
to	400	R60400-1	—	—	—	—	10	12.0	4.0	3.0	4.5	0.63	1.75	3.0	1.0	—	0.56	500 MCM Cu-Al
to	600	R60600-1	—	—	—	—	10	14.0	4.97	3.0	5.5	1.125	1.75	4.0	1.0	—	0.56	2-500 MCM Cu-Al

*UL Recognized, No CSA Certification.