



Catalog Number J600 Series

CLASS J FUSEBLOCKS:

J600 Series: For use with Class J Fuses
(Edison JDL, JFL and CJ)

Construction: Thermoplastic, UL Flammability; 94VO

Ampere Ratings: 1/2-600 Amps

Voltage Ratings: 600 Volts AC

Agency Approvals:

UL Listed, Guide IZLT, File E14853

CSA, Class 6225-01, File 47235

Standard J Fuseblocks (600V) Catalog Data

Amps	Poles	Catalog Numbers				Fig. No.	Max. Wire Size
		Screw†	Pressure Plate†	Box Lug	Box Lug w/ Retaining Clip		
1/2-30	1	J60030-1S†	J60030-1P†	J60030-1C	J60030-1CR††	1	S.P. #10 Cu; C #2 Cu-Al
	2	J60030-2S	J60030-2P†	J60030-2C	J60030-2CR††	2	
	3	J60030-3S	J60030-3P†	J60030-3C	J60030-3CR††	3	
31-60	1	—	—	J60060-1C	J60060-1CR††	1	#2 Cu Al
	2	—	—	J60060-2C	J60060-2CR††	2	
	3	—	—	J60060-3C	J60060-3CR††	3	
61-100	3	—	—	—	J60100-3CR††	4	1/0 Cu-Al
to 200	1	—	—	—	J60200-1CR	5	250MCM Cu-Al
to 400	1	—	—	—	J60400-1CR	7	500MCM Cu-Al
to 600	1	—	—	—	J60600-1CR	9	(2) 500MCM Cu-Al

† Clip reinforcing springs are standard on fuseblocks rated 100A and above. Available on 30A and 60A blocks by adding the letter "R" to the end of the part number.

††Copper only connections available by changing "CR" suffix to "COR".

Dimensional Data

1/2 to 60A

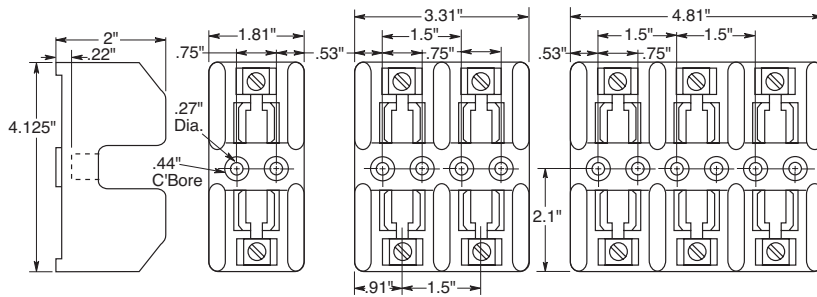


FIGURE 1.

FIGURE 2.

FIGURE 3.

61 to 100A

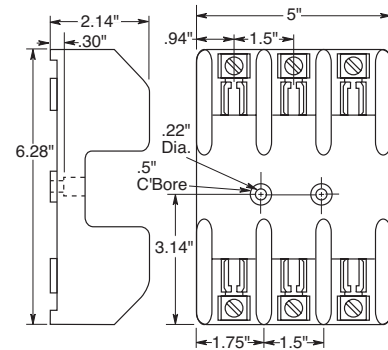


FIGURE 4.

101 to 600A

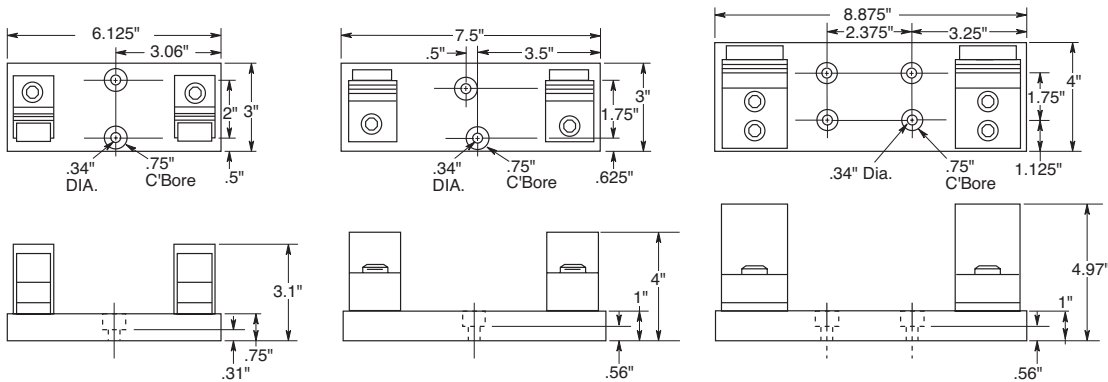


FIGURE 5.

FIGURE 6.

FIGURE 7.