

WRS3000X

THREE FUNCTION REWORK AND REPAIR SYSTEM

THE WELLER ADVANTAGE:

300 watts of total power. Three independently controlled channels. Soldering, desoldering, and hot air. Our basic rework and repair station is anything but basic.



Self-contained pump generates vacuum for desoldering tool and air for hot air tool



WRS3000X Components & Specifications:

WRS3000	Power Unit (Order No. 0053302299)
Voltage	120 V (input); 24 V (output)
Power Consumption	300 W
Temperature Range	150° F – 850° F (50° C – 450° C)
Dimensions	9.5 x 10.6 x 4.1 in. (241 x 269 x 104 mm)
Pump Type	Rotary Vane
Vacuum Pressure	20.7 in. (526 mm) HG
Air Flow Volume	1 l/min. – 10 l/min.
Temperature Accuracy	+/- 16° F (+/- 10° C)
Temperature Stability	+/- 10° F (+/- 6° C)
ESD Safe	Yes

DXV80 Desoldering Pencil	HAP1 Hot Air Pencil
Power Consumption	80 W
Heating Element Type	Nichrome Wound
Cord Length	4 ft. (1.22 m)
Supplied Tiptet	DX112
Supplied Stand	AKV80 (Order No. 0051503999)

WSP80 Soldering Pencil (Order No. 0051318099)	
Power Consumption	80 W
Heating Element Type	Silver Spool
Cord Length	4 ft. (1.22 m)
Supplied Tiptet	LTB
Supplied Stand	WPH81

HAP1 Hot Air Pencil	
Power Consumption	100 W
Heating Element Type	Nichrome wound; fiberglass and ceramic insulated
Cord Length	4 ft. (1.22 m)
ESD safe	Yes
Supplied Nozzle	0058727821
Supplied Stand	PH60

WRS3000X FEATURES AND BENEFITS:

- Soldering, desoldering, hot air
- Vacuum delay feature allows solder to reach the collection chamber before vacuum is shut off to avoid clogging
- Microprocessor with digital read-out provides complete accuracy and reliability
- Higher power means less time spent on the PCB, reducing risk of component damage
- Temperature set-back can be programmed from 5 to 60 minutes
- Lock-out key maintains process control for set parameters
- Special ionizing circuit assures hot air is static-free to protect sensitive components
- For full range of soldering tips, see page 5. For desoldering tiptets see page 29. For hot air nozzles and thermal tweezers tips, see page 30.

WRS3000XT

Start with our basic WRS3000X system, then add the amazingly useful Weller® Thermal Tweezer, and you've got this rework and repair powerhouse.



WRS3000XT Components & Specifications:

In addition to all the components shown for the WRS3000X above, the WRS3000XT includes:

WTA50 Thermal Tweezers (Order No. 0051317199)	
Power Consumption	50 W
ESD safe	Yes
Supplied Stand	AK51 (Order No. 0051504299)

WTA50 Thermal Tweezers save time by allowing you to desolder defective SMT components and lift them from the board in a single action

WTA50SET (Order No. 0053313399)	
WTA50 Thermal Tweezers and AK51 Stand	

Weller®

WRS4000X

FOUR-FUNCTION REWORK AND REPAIR SYSTEM

THE WELLER ADVANTAGE:

With 400 watts of total power over four independently controlled channels, plus air and vacuum ports, the WRS4000X offers outstanding performance and flexibility.



FEATURES AND BENEFITS:

- Soldering, desoldering, hot air, thermal tweezers
- Vacuum delay feature allows solder to reach the solder trap before vacuum is shut off to avoid clogging
- Microprocessor with digital read-out provides complete accuracy and reliability
- Higher power means less time spent on the PCB, reducing risk of component damage
- Temperature set-back can be programmed from 5 to 60 minutes
- Lock-out key maintains process control for set parameters
- Special ionizing circuit assures hot air is static-free to protect sensitive components
- For a full range of soldering tips, see page 5. For desoldering tiplests, see page 29. For hot air nozzles and thermal tweezers tips, see page 30.

WRS4000X Components:

WRS1002	Power Unit (SEE PAGE 31)
WRS3000	Power Unit (Order No. 0053302299)
DXV80	Desoldering Pencil (Order No. 0051318099)
WSP80	Soldering Pencil
HAP1	Hot Air Pencil
WTA50	Thermal Tweezers (Order No. 0051317199)

See pages 22 and 23 for specification details

WRS5000X

FIVE-FUNCTION REWORK AND REPAIR SYSTEM

THE WELLER ADVANTAGE:

This system combines all the features of the WRS4000X and adds the dispensing and vacuum pickup capabilities of the WRS2000 single channel analog controlled rework station.



FEATURES AND BENEFITS:

- Soldering, desoldering, hot air, thermal tweezers, dispensing
- Vacuum delay feature allows solder to reach the solder trap before vacuum is shut off to avoid clogging
- Microprocessor with digital read-out provides complete accuracy and reliability
- Higher power means less time spent on the PCB, reducing risk of component damage
- Temperature set-back can be programmed from 5 to 60 minutes
- Lock-out key maintains process control for set parameters
- Special ionizing circuit assures hot air is static-free to protect sensitive components
- For full range of soldering tips, see page 5. For desoldering tiplests, see page 29. For hot air nozzles and thermal tweezers tips, see page 30.

WRS5000X Components:

WRS2000	Power Unit
WRS3000	Power Unit (Order No. 0053302299)
DXV80	Desoldering Pencil
WSP80	Soldering Pencil (Order No. 0051318099)
HAP1	Hot Air Pencil
WTA50	Thermal Tweezers (Order No. 0051317199)

See pages 28 and 29 for specification details



WRS7000X

SEVEN-FUNCTION REWORK AND REPAIR SYSTEM

THE WELLER ADVANTAGE:

The ultimate tool for the rework and repair of through hole and SMT boards... **1,200 watts of power over five independently controlled channels, with digitally controlled, built-in hot air.**



WRS7000X FEATURES AND BENEFITS:

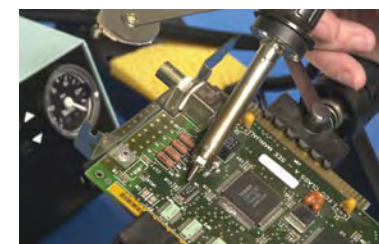
- Soldering, desoldering, large hot air pencil, small hot air pencil, thermal tweezers, dispensing, vacuum pick-up
- Vacuum delay feature allows solder to reach the collection chamber before vacuum is shut off to avoid clogging
- Microprocessor with digital read-out provides complete accuracy and reliability
- Temperature set-back can be programmed from 5 to 60 minutes
- The ergonomic and powerful HAP3 hot air pencil, together with the extensive range of patented technology nozzles (see page 24), makes this system extremely versatile
- Lock-out key maintains process control for set parameters
- Special ionizing circuit assures hot air is static-free to protect sensitive components
- For full range of soldering tips, see page 5. For desoldering tiptlets, see page 29. For hot air nozzles and Thermal tweezers tips, see page 30.

Two self-contained pumps generate vacuum for desoldering tool and air for hot air tools

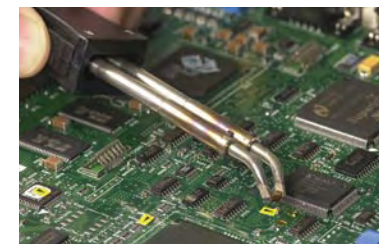
100 W hot air pencil

NEW Disposable solder trap on the DXV80 makes cleanout quick and easy

80 W soldering pencil



Non-contact soldering with the HAP1 hot air pencil



Desoldering a SMT component using the WTA50 thermal tweezers

WRS7000X Components & Specifications:

WRS2000
Voltage 120 V (input); 24 V (output)
Power Consumption 130 W
Temperature Range 300° F – 999° F (100° C – 550° C)
Dimensions 9.5 x 10.6 x 4.3 in. (240 x 270 x 105 mm)
Pump Type Compressed Air Required
Air Flow Volume 1 l/min. – 10 l/min.
Temperature Accuracy +/- 50° F (+/- 30° C)
Temperature Stability +/- 10° F (+/- 6° C)
ESD Safe Yes

WRS3000
Voltage 120 V (input); 24 V (output)
Power Consumption 300 W
Temperature Range 150° F – 850° F (50° C – 450° C)
Dimensions 9.5 x 10.6 x 4.1 in. (241 x 269 x 104 mm)
Pump Type Rotary Vane
Vacuum Pressure 20.7 in. (526 mm) HG
Air Flow Volume 1 l/min. – 10 l/min.
Temperature Accuracy +/- 16° F (+/- 10° C)
Temperature Stability +/- 10° F (+/- 6° C)
ESD Safe Yes

WHA3000P
Voltage 120 V (input)
Maximum Heat Power 700 W
Temperature Range 150° F – 999° F (50° C – 550° C)
Dimensions 9.5 x 10.6 x 6.7 in. (240 x 270 x 170 mm)
Air Flow Volume 1 l/min. – 50 l/min.
Temperature Accuracy +/- 77° F (+/- 25° C)
ESD Safe Yes

DXV80 Desoldering Pencil (Order No. 0051318099)
Power Consumption 80 W
Heating Element Type Nichrome Wound
Cord Length 4 ft. (1.22 m)
Supplied Tiptlet DX112
Supplied Stand AKV80
(Order No. 0051503999)

WSP80 Soldering Pencil
Power Consumption 80 W
Heating Element Type Silver Spool
Cord Length 4 ft. (1.22 m)
Supplied Tiptlet LTB
Supplied Stand WPH81

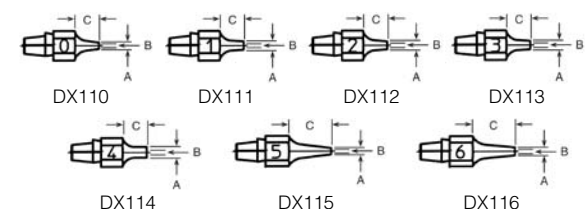
HAP1 Hot Air Pencil
Power Consumption 100 W
Heating Element Type Nichrome wound; fiberglass and ceramic insulated
Cord Length 4 ft. (1.22 m)
ESD safe Yes
Supplied Nozzle 0058727821
Supplied Stand PH60

WTA50 Thermal Tweezers (Order No. 0051317199)
Power Consumption 50 W
ESD safe Yes
Supplied Stand AK51
(Order No. 0051504299)

WTA50SET (Order No. 0053313399)
WTA50 Thermal Tweezers and AK51 Stand

TIPS

DX SERIES TIPTLETS FOR DS80 AND DSV80



Cat No.	Order No.	A (O.D.)		B (I.D.)		C	
		IN.	MM	IN.	MM	IN.	MM
DX110	0051314099	0.075	1.90	0.028	0.70	0.325	18.00
DX111	0051314199	0.098	2.50	0.028	0.70	0.325	18.00
DX112	0051314299	0.091	2.30	0.039	1.00	0.325	18.00
DX113	0051314399	0.098	2.50	0.047	1.20	0.325	18.00
DX114	0051314499	0.130	3.30	0.071	1.80	0.325	18.00
DX115	0051314599	0.075	1.90	0.028	0.70	0.325	18.00
DX116	0051314699	0.106	2.70	0.047	1.20	1.142	29.00

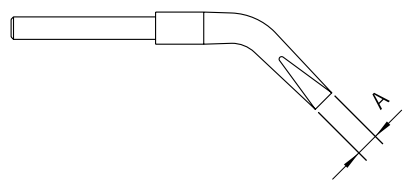


REWORK STATIONS

HOT AIR STATIONS

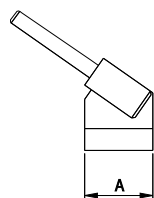
TIPS

**WTA SERIES TIPPLETS FOR WTA50 THERMAL TWEEZERS
TINNED WITH LEAD FREE SOLDER**



THERMAL TWEEZERS TIPS

Cat No.	Order No.	A	
		IN.	MM
WTA1	0054414199	0.039	1.00
WTA2	0054414699	0.118	3.00
WTA3	0054414799	0.236	6.00

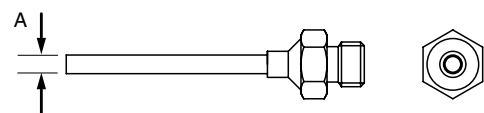


THERMAL TWEEZERS TIPS

Cat No.	Order No.	A	
		IN.	MM
WTA4	0054414399	0.492	12.50
WTA5	0054414499	0.728	18.50

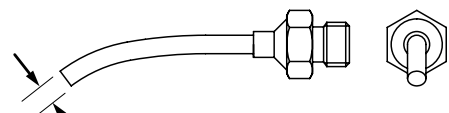
NOZZLES

NOZZLES FOR HAP1 SMALL HOT AIR PENCIL



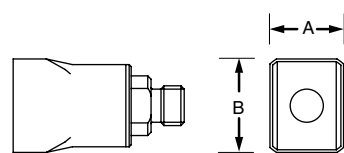
ROUND

Cat No.	A		B	
	IN.	MM	IN.	MM
0058727823	0.031	0.80	--	--
0058727821	0.047	1.20	--	--
0058727787	0.098	2.50	--	--
0058727822	0.118	3.00	--	--



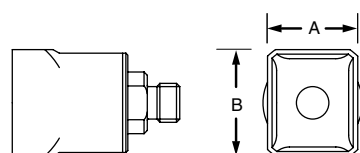
ROUND BENT

Cat No.	A		B	
	IN.	MM	IN.	MM
0058727786	0.079	2.00	--	--



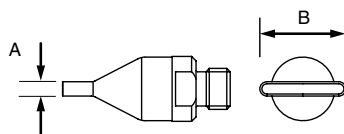
2-SIDES HEATED

Cat No.	A		B	
	IN.	MM	IN.	MM
0058727782	0.394	10.00	0.512	13.00
0058727781	0.394	10.00	0.591	15.00
0058727784	0.394	10.00	0.709	18.00
0058727779	0.413	10.50	0.413	10.50



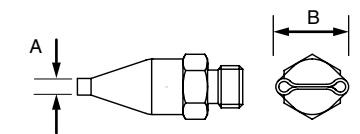
4-SIDES HEATED

Cat No.	A		B	
	IN.	MM	IN.	MM
0058727777	0.236	6.00	0.256	6.50
0058727778	0.236	6.00	0.354	9.00
0058727780	0.394	10.00	0.591	15.00
0058727783	0.492	12.50	0.591	15.00
0058727785	0.709	18.00	0.709	18.00



FLAT

Cat No.	A		B	
	IN.	MM	IN.	MM
0058727774	0.059	1.50	0.315	8.00
0058727773	0.059	1.50	0.394	10.00
0058727772	0.059	1.50	0.472	12.00



DUAL

Cat No.	A		B	
	IN.	MM	IN.	MM
0058727775	0.059	1.50	0.315	8.00
0058727776	0.059	1.50	0.394	10.00

Weller Hot Air Technology

THE WELLER ADVANTAGE:

Whether you are replacing SMDs or other types of components, such as SMT bases, QFPs, PLCC devices, or PGAs, Weller provides you with a solution to your most difficult rework challenges.

With the WHA3000 Series Systems, you have the latest in versatile, effective, and repeatable non-destructive desoldering technology.

WHA3000PS

WHA3000P

WHA3000V

WHA300

CW16800-B
CF61657AFN
N 29018
8744
TAIWAN



WHA3000PS

DIGITAL REWORK SYSTEM

THE WELLER ADVANTAGE:

This station has high-end versatility to meet your most demanding rework challenges, including repair of fine-pitch components on densely-packed boards.



WBH3000S

Circuit board holder with hot air pencil stand holds the HAP3 hot air pencil perpendicular to the printed circuit board under repair, raises and lowers it precisely onto the component being reworked, and swings it out of the way for access to the circuit board



WHA3000P

700-watt hot air station features patented Weller nozzle technology for maximum process control and user friendly operation, plus a powerful variable speed-controlled turbine for an air volume of up to 50 liters/min

FEATURES AND BENEFITS:

- 700 watts of power allow work on larger dual in line and quad pack components
- An ion trap assures that only ESD safe hot air is directed at the component
- Memory space to store up to 10 thermal profiles ensures process repeatability
- Holds circuit boards up to 310 mm x 320 mm for outstanding versatility
- IR heating plate has a total heated area of 120 mm x 190 mm with 3 ceramic elements for controlled, even heat.
- Set and actual temperatures are digitally displayed on the LCD panel for added control of process
- An external sensor can be connected to display actual temperatures at specific areas of the circuit under repair to further guard against damage to sensitive components
- The hot plate can be controlled from its own internal control system or integrated into the control system of the WHA3000P or WHA3000V
- For full range of hot air nozzles, see page 39

WHP3000

Positioned beneath the WBH3000S circuit board holder, this IR heating plate preheats circuit board under repair to reduce possibility of thermal damage.

WHA3000PS Components & Specifications:

WHA3000P

Voltage
Power Consumption
Temperature Range
Dimensions
Pump Type
Vacuum Pressure
Air Flow Volume
Temperature Accuracy
ESD Safe

Power Unit

120 V (input); 24 V (output)
700 W
150° F – 999° F (50° C – 550° C)
9.5 x 10.6 x 6.7 in. (240 x 270 x 170 mm)
Maintenance-free Rotary Vane
-0.6 bar
5 l/min. – 50 l/min.
+/- 77° F (+/- 25° C)
Yes

WBH3000S Circuit Board Holder with Pivoting Holder

(See Page 34 of this catalog for specifications)

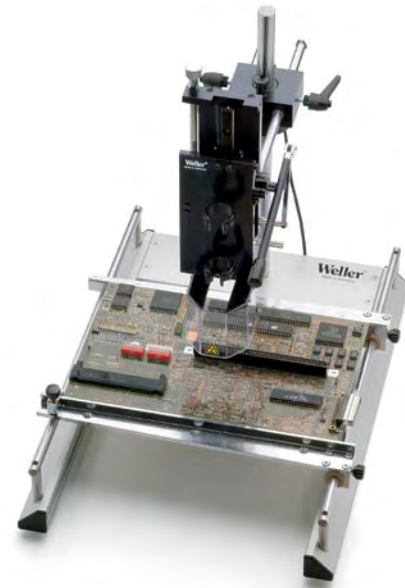
WHP3000 Heating Plate

(See Page 34 of this catalog for specifications)



WHA3000PS

COMPONENTS AND ACCESSORIES



WBH3000S CIRCUIT BOARD HOLDER WITH SWING-AWAY TOOL HOLDER

- Holds circuit boards up to 310 mm x 320 mm for outstanding versatility
- Precision glides allow board to be precisely positioned and secured at any point along the X and Y axes
- Accommodates both single and double sided boards
- Holds PCBs totally flat for added precision and repeatability
- Tool holder positions hot air pencil perpendicular to the PCB; smooth-acting lever raises and lowers tool precisely onto the component
- Smooth-acting lever raises and lowers the HAP3 hot air pencil 1.4 in. (35 mm) along the Z axis
- Swing-away "Stop and Go" feature automatically switches hot air pencil to "standby" mode when holder is pivoted to the side, reducing temperature and air flow

WBH3000 CIRCUIT BOARD HOLDER (not shown)
Same as WBH3000S, but without tool holder

WHP3000 INFRARED HEATING PLATE

- Reduces risk of thermal damage by providing controlled, even heat
- Set and actual temperatures digitally displayed for added control of process
- Optional Type K thermocouple can be connected to display actual temperatures at specific areas of the circuit under repair to further guard against damage to sensitive components
- Can be used alone or beneath WBH3000S or WBH3000 circuit board holders
- Can be controlled independently, or can be integrated into the control system of either the WHA3000P or the WHA3000V



Components & Specifications

WBH3000S	
Dimensions	12.6 x 17.6 x 17.3 in. (320 x 446 x 440 mm)
WBH3000	
Dimensions	12.6 x 17.6 x 3.9 in. (320 x 446 x 100 mm)
WHP3000	
Voltage	120 V
Power Consumption	200 W (small heating zone); 600 W (large heating zone)
Temperature Range	150° F – 750° F (50° C – 400° C)
Dimensions	10.0 x 15.6 x 2.8 in. (254 x 395 x 70 mm)
ESD Safe	Yes

Accessories

0058754873	Adjustable circuit board stop
0058755745	Support for large circuit boards
0058755741	Circuit board clamp
0058754924	Clamp set for irregular-shaped circuit boards (mobile phones, digital cameras, etc.)

WHA3000P

DIGITAL HOT AIR STATION

THE WELLER ADVANTAGE:

This 700-watt hot air station has advanced features for unsurpassed process control and a quiet, yet powerful internal air source for maximum portability.



"Stop and Go" tool holder automatically switches hot air pencil to "standby" mode, reducing air flow but maintaining operating temperature

FEATURES AND BENEFITS:

- Self-contained bench-top unit – no external air source required
- Capable of performing demanding repair tasks on PCBs with complex fine pitch surface mounted components
- Set and actual temperatures are digitally displayed on the LCD panel for added process control
- Automatic mode allows up to ten separate programs to be stored in memory, each with a unique air temperature / air volume / process time profile for the ultimate in control and process repeatability
- Special ionizing circuit assures hot air is static-free to protect sensitive components
- Optional nozzle change tool allows quick changeout of nozzles, even when hot
- Works with optional Type K thermocouple to measure temperature on specific area of PCB for more precise process monitoring
- Three position foot switch: OFF–HOT AIR–VACUUM
- Hot air pencil accepts wide range of patented technology nozzles for maximum versatility, see page 39

WHA3000V

Similar to the WHA3000P, except without internal turbine air source; uses compressed air or inert gas



WHA3000P Components & Specifications

Power Unit	
Voltage	120 V
Power Consumption	700 W
Temperature Range	150° F – 999° F (50° C – 550° C)
Dimensions	9.5 x 10.6 x 6.7 in. (240 x 270 x 170 mm)
Pump Type	Maintenance Free, Rotary Vane
Vacuum Pressure	- 0.6 Bar
Air Flow Volume	5 l/min. – 50 l/min.
Temperature Accuracy	+/- 77° F (+/- 25° C)
ESD Safe	Yes

Accessories for WHA3000P and WHA3000V

0058736780	Manual control panel
0051504999	Nozzle change tool
0058754951	0.25 mm Type K external sensor
0053119099	0.50 mm Type K external sensor
0051504899	Stand for hot air nozzles



WHA300

SELF CONTAINED HOT AIR REWORK STATION

THE WELLER ADVANTAGE:

Economical, yet capable enough to handle most bench top rework jobs, this 700-watt self-contained hot air station combines a small footprint with big value.



FEATURES AND BENEFITS:

- Compact design maximizes workspace efficiency
- Finger-activated hot air switch on pencil provides exceptional control
- Hot air hand piece uses nozzles found on page 39

WHA300 Components and Specifications:

Power Unit	
Voltage	120 V (input); 120 V (output)
Power Consumption	700 W
Temperature Range	150° F – 1000° F or 50° C – 550° C
Dimensions	5.1 in. diameter x 8.5 in. (130 x 216 mm)
Pump Type	Turbine
Air Flow Volume	10 l/min. – 50 l/min.
Temperature Accuracy	+/- 86° F (+/- 55° C)
ESD Safe	No
Heating Element Type	Nichrome Wire Wound, Fiberglass and Ceramic Insulated

Nozzle not included



Patented Weller nozzle technology safely removes QFPs, PGAs, and SMT bases.

WRS1002

DIGITAL SELF CONTAINED HOT AIR REWORK STATION

THE WELLER ADVANTAGE:

Digital microprocessor control and an internal air source give this 100-watt single channel hot air station amazing performance and versatility.



FEATURES AND BENEFITS:

- Powerful (100-watt) HAP1 pencil precisely delivers hot air to small SMT parts, reducing the risk of damage to adjacent components
- Finger-activated hot air switch on pencil provides exceptional control
- Digital temperature control has easy-to-read LED display for fast and accurate temperature set
- Optional WCB1 programming module provides temperature lock-out for process control, temperature set-back for extended tip life, and ° F to ° C conversion
- Hot air pencil uses nozzles found on page 30

WRS1002 Components and Specifications:

Power Unit	
Voltage	120 V (input); 24 V (output)
Power Consumption	100 W
Temperature Range	150° F – 999° F or 50° C – 550° C
Dimensions	4.5 x 5.9 x 3.6 in. (114 x 150 x 91 mm)
Air Flow Volume	1 l/min. – 6 l/min.
Temperature Accuracy	+/- 50° F (+/- 30° C)
ESD Safe	Yes
HAP1 Pencil	
Power Consumption	100 W
Heating Element Type	Nichrome wound; fiberglass and ceramic insulated
Cord Length	4 ft. (1.22 m)
ESD Safe	Yes
Supplied Nozzle	0058727821
Supplied Stand	PH60



www.cooperhandtools.com/weller



WAD101

DIGITAL SHOP AIR HOT AIR STATION

THE WELLER ADVANTAGE:

Digital microprocessor control and the ability to use external compressed air or gas give this 100-watt hot air station amazing performance and versatility.

Analog dial for manual control of hot air flow



FEATURES AND BENEFITS:

- Powerful (100-watt) HAP1 pencil precisely delivers hot air to small SMT parts, reducing the risk of damage to adjacent components
- Finger-activated hot air switch on pencil provides exceptional control
- Digital temperature control has easy-to-read LED display for fast and accurate temperature set
- Optional WCB1 programming module provides temperature lock-out for process control, temperature set-back for extended tip life, and ° F to ° C conversion
- Hot air pencil uses nozzles found on page 30

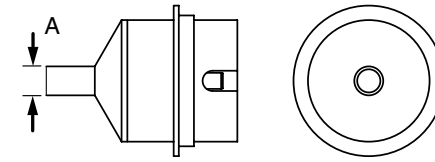
WAD101 Components and Specifications:

Power Unit	
Voltage	120 V (input); 24 V (output)
Power Consumption	100 W
Temperature Range	150° F – 999° F or 50° C – 550° C
Dimensions	4.5 x 5.9 x 3.6 in. (114 x 150 x 91 mm)
Air Flow Volume	1 l/min. – 6 l/min.
Temperature Accuracy	+/- 50° F (+/- 30° C)
ESD Safe	Yes

HAP1 Pencil	
Power Consumption	100 W
Heating Element Type	Nichrome wound; fiberglass and ceramic insulated
Cord Length	4 ft. (1.22 m)
ESD Safe	Yes
Supplied Nozzle	0058727821
Supplied Stand	PH60

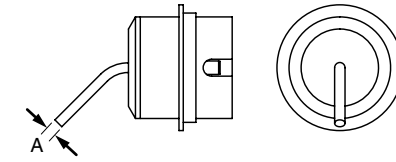
NOZZLES

FOR WHA300 AND WHA300P



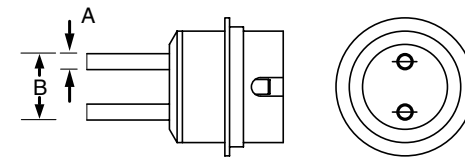
ROUND (NO VACUUM)

Cat No.	A		B	
	IN.	MM	IN.	MM
0058736881	0.098	2.50	--	--
0058736867	0.157	4.00	--	--
0058736870	0.276	7.00	--	--
0058736836Δ	0.453	11.50	--	--



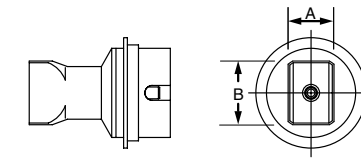
ROUND BENT (NO VACUUM)

Cat No.	A		B	
	IN.	MM	IN.	MM
0058736882	0.059	1.50	--	--



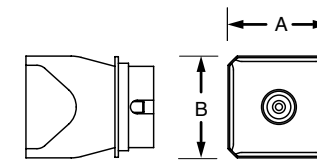
ROUND DUAL (NO VACUUM)

Cat No.	A		B	
	IN.	MM	IN.	MM
0058736883	0.098	2.50	0.374	9.50



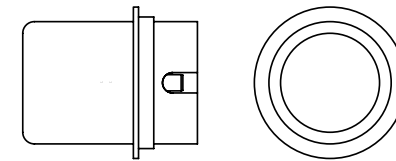
2-SIDES HEATED

Cat No.	A		B	
	IN.	MM	IN.	MM
0058736840	0.583	4.80	0.846	21.50
0058736842	0.394	10.00	0.551	14.00
0058736843	0.421	10.70	0.421	10.70
0058736841	0.472	12.00	0.748	19.00
0058736876Δ	0.472	12.00	1.063	27.00
0058736857Δ	1.496	38.00	1.496	38.00
0058736873Δ	1.575	40.00	1.575	40.00



4-SIDES HEATED

Cat No.	A		B	
	IN.	MM	IN.	MM
0058736839	0.433	11.00	0.433	11.00
0058736818	0.583	14.80	0.583	14.80
0058736814	0.709	18.00	0.709	18.00
0058736807	0.807	20.50	0.807	20.50
0058736804	1.024	26.00	1.024	26.00
0058736833	1.260	32.00	1.260	32.00
0058736891	1.417	36.00	1.417	36.00
0058736890Δ	1.693	43.00	1.693	43.00
0058736838	0.394	10.00	0.571	14.50
0058736880Δ	0.472	12.00	0.945	24.00
0058736837	0.512	13.00	0.610	15.50
0058736892Δ	0.551	14.00	1.063	27.00
0058750721	0.669	17.00	0.925	23.50
0058736877Δ	0.669	17.00	1.142	29.00
0058736998Δ	0.906	23.00	1.398	35.50
0058736999Δ	1.201	30.50	1.909	48.50
0058736858Δ	1.260	32.00	1.732	44.00
0058750709Δ	1.496	38.00	1.909	48.50
0058750714Δ	1.496	38.00	2.402	61.00



ROUND DUAL (NO VACUUM)

Cat No.	A		B	
	IN.	MM	IN.	MM
0058736883	--	--	--	--

CSF REPLACEMENT RUBBER INSERTS

Cat. No.	Description
W58713798	Small, 3 mm
W58713799	Large, 6 mm

(Δ) Denotes Make To Order. Contact us for a quote and lead-time.

