

WRS7000X

SEVEN-FUNCTION REWORK AND REPAIR SYSTEM

THE WELLER ADVANTAGE:

The ultimate tool for the rework and repair of through hole and SMT boards... **1,200 watts of power over five independently controlled channels, with digitally controlled, built-in hot air.**



WRS7000X FEATURES AND BENEFITS:

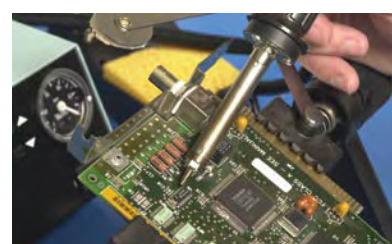
- Soldering, desoldering, large hot air pencil, small hot air pencil, thermal tweezers, dispensing, vacuum pick-up
- Vacuum delay feature allows solder to reach the collection chamber before vacuum is shut off to avoid clogging
- Microprocessor with digital read-out provides complete accuracy and reliability
- Temperature set-back can be programmed from 5 to 60 minutes
- The ergonomic and powerful HAP3 hot air pencil, together with the extensive range of patented technology nozzles (see page 24), makes this system extremely versatile
- Lock-out key maintains process control for set parameters
- Special ionizing circuit assures hot air is static-free to protect sensitive components
- For full range of soldering tips, see page 5. For desoldering tiptlets, see page 29. For hot air nozzles and Thermal tweezers tips, see page 30.

Two self-contained pumps generate vacuum for desoldering tool and air for hot air tools

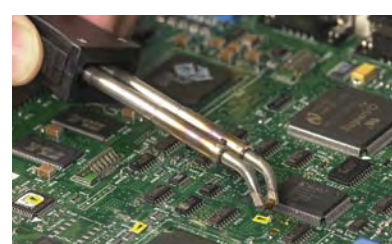
100 W hot air pencil

NEW Disposable solder trap on the DXV80 makes cleanout quick and easy

80 W soldering pencil



Non-contact soldering with the HAP1 hot air pencil



Desoldering a SMT component using the WTA50 thermal tweezers

WRS7000X Components & Specifications:

WRS2000
Voltage 120 V (input); 24 V (output)
Power Consumption 130 W
Temperature Range 300° F – 999° F (100° C – 550° C)
Dimensions 9.5 x 10.6 x 4.3 in. (240 x 270 x 105 mm)
Pump Type Compressed Air Required
Air Flow Volume 1 l/min. – 10 l/min.
Temperature Accuracy +/- 50° F (+/- 30° C)
Temperature Stability +/- 10° F (+/- 6° C)
ESD Safe Yes

WRS3000
Voltage 120 V (input); 24 V (output)
Power Consumption 300 W
Temperature Range 150° F – 850° F (50° C – 450° C)
Dimensions 9.5 x 10.6 x 4.1 in. (241 x 269 x 104 mm)
Pump Type Rotary Vane
Vacuum Pressure 20.7 in. (526 mm) HG
Air Flow Volume 1 l/min. – 10 l/min.
Temperature Accuracy +/- 16° F (+/- 10° C)
Temperature Stability +/- 10° F (+/- 6° C)
ESD Safe Yes

WHA3000P
Voltage 120 V (input)
Maximum Heat Power 700 W
Temperature Range 150° F – 999° F (50° C – 550° C)
Dimensions 9.5 x 10.6 x 6.7 in. (240 x 270 x 170 mm)
Air Flow Volume 1 l/min. – 50 l/min.
Temperature Accuracy +/- 77° F (+/- 25° C)
ESD Safe Yes

DXV80 Desoldering Pencil (Order No. 0051318099)
Power Consumption 80 W
Heating Element Type Nichrome Wound
Cord Length 4 ft. (1.22 m)
Supplied Tiptlet DX112
Supplied Stand AKV80
(Order No. 0051503999)

WSP80 Soldering Pencil
Power Consumption 80 W
Heating Element Type Silver Spool
Cord Length 4 ft. (1.22 m)
Supplied Tiptlet LTB
Supplied Stand WPH81

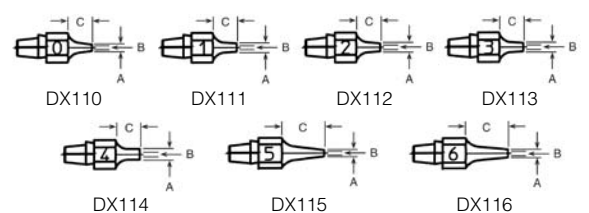
HAP1 Hot Air Pencil
Power Consumption 100 W
Heating Element Type Nichrome wound; fiberglass and ceramic insulated
Cord Length 4 ft. (1.22 m)
ESD safe Yes
Supplied Nozzle 0058727821
Supplied Stand PH60

WTA50 Thermal Tweezers (Order No. 0051317199)
Power Consumption 50 W
ESD safe Yes
Supplied Stand AK51
(Order No. 0051504299)

WTA50SET (Order No. 0053313399)
WTA50 Thermal Tweezers and AK51 Stand

TIPS

DX SERIES TIPTLETS FOR DS80 AND DSV80



Cat No.	Order No.	A (O.D.)		B (I.D.)		C	
		IN.	MM	IN.	MM	IN.	MM
DX110	0051314099	0.075	1.90	0.028	0.70	0.325	18.00
DX111	0051314199	0.098	2.50	0.028	0.70	0.325	18.00
DX112	0051314299	0.091	2.30	0.039	1.00	0.325	18.00
DX113	0051314399	0.098	2.50	0.047	1.20	0.325	18.00
DX114	0051314499	0.130	3.30	0.071	1.80	0.325	18.00
DX115	0051314599	0.075	1.90	0.028	0.70	0.325	18.00
DX116	0051314699	0.106	2.70	0.047	1.20	1.142	29.00

