

RLS and Binding Post Blocks



RLS Series IDC Terminal Block

Emerson's RLS series blocks consist of compact, IDC (insulation displacement connection) wire connectors, which provide fast, easy connection of .4 mm to .6 mm (22 AWG to 26 AWG) wire. Each connector is silicone-grease filled with tin-plated terminals, providing maximum environmental protection for terminated pairs.

The RLS series includes blocks for 2- to 50-pairs. "Pair-at-a-time" wire termination is accomplished by lifting the RLS activator, inserting a pair of unstripped wires into the appropriate slots on the activator, and pressing firmly down on the activator.

The 2- and 5-pair blocks are internally wired, with RLS input and output. The 10-, 25-, and 50-pair blocks are potted on the rear side of the block, and are available in a variety of harness lengths, with or without connectors.

The RLS family of blocks is a flexible terminal block that can be employed in a wide variety of cross-connect or building entrance applications. These blocks are ideal for outdoor use.

Emerson Network Power

Item No.	Mfg. Part No.	Description
0000044355	RLS25	RLS25 with 2-1/2-Foot Harness
0000003830	RLS50	RLS50 with 7-Foot Harness
0000010951	RLS50DPM	Self Strip Block with 4005 DPM Splice Module
0000012799	RLS507FT3M4005	Self Strip Block with 4005 DPM Splice Module with 7-Foot Harness



CQF50 Binding Post Block

Emerson CQF50 binding post terminal blocks are screw-post quiet-front blocks. A recessed silo eliminates accidental shorts from moisture bridges and during jumper runs. The screws are staked to prevent accidental loss of screws during termination. The captivated washers rise out of the silo as the screw is loosened. The rear of the block is potted for maximum environmental protection of the feeder terminations.

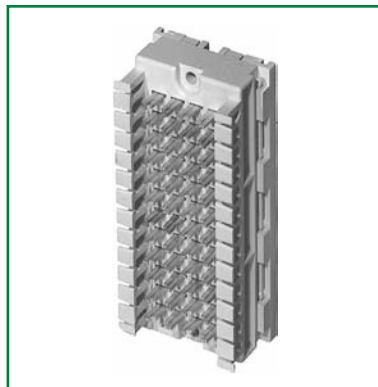
The blocks are available in a variety of harness lengths, with or without connectors. CQF blocks terminate stripped 20 AWG through 26 AWG (.4 mm to .8 mm) wire conductors on the face of the block. CQF50 are flexible jumpering devices that can be employed in a wide variety of FDI (feeder distribution interface) and cross-connect applications or building entrance terminals.

Emerson Network Power

Item No.	EMBARQ Item No.	Mfg. Part No.	Description
7725990149	772599	P32270	50-Pair BT Block with 6-Foot Stub



66 Blocks



66 Blocks

R66C series non-connectorized quick-clip blocks are designed for quick and easy termination of solid insulated copper wire. These 6 pair blocks are configured as 4 X 12, with all 4 clips in each row being common.

R66M series connectorized quick-clip blocks speed wiring and serve as an interface with customer premise equipment. Pair counts of 25, 50, and 100 may be ordered with either plug or receptacle 50-position RJ21 connectors, and are available in a variety of configurations and wiring schemes.

Emerson Network Power

Item No.	EMBARQ Item No.	Mfg. Part No.	Description
7711020149	771102	R66C16	Block Connector 6-Pair Quick Connect Tall Base
7711010149	771101	R66CB16	Block Connector 6-Pair Quick Connect Short Base
0000030463		R66M112	66 Block 12-Pair

RPT and RGT Blocks



RPT and RGT Terminal Blocks

Emerson RPT and RGT series terminal blocks are made of high-impact plastic, and where applicable, are potted with a high dielectric durable polyurethane compound. The service wire binding posts are tin-plated brass; nuts and washers are also made of brass.

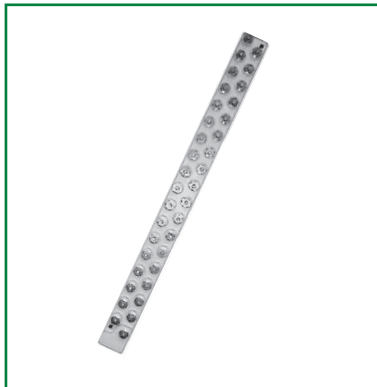
The RPT and RGT series terminal blocks are available back-stubbed (RGT), bottom-stubbed (RPT), non-stubbed (RGT), protected or unprotected, and in 5 pair to 50 pair configurations. The terminal blocks are stubbed with 24 AWG, fully color-coded insulated jacketed stubs, which are either air core or filled.

The RPT and RGT series fixed-count terminal blocks are designed specifically for use in outside building terminals and buried cable pedestals and closures. The terminal blocks are used in fixed-count applications to accommodate SAC (serving area concept) systems.

Emerson Network Power

Item No.	EMBARQ Item No.	Mfg. Part No.	Description
1531160149	153116	RGT1218	Terminal Block 12-Pair with 18-Inch Stub RG
7722960149		RGT25A4	Terminal Block 25-Pair with 48-Inch Stub RG
7722160149	772216	RPT5A4	Terminal Block 5-Pair Fixed Count
7726360149	772636	RPT10A4	Terminal Block RPT10A-4 Fixed Count
7722870149	772287	RPT12	Terminal Block 12-Pair Unprotected with 4-Foot Stub
0000024935		RPT25	Terminal Block Assembly RPT25
7721580149	772158	RPT25A4	Terminal Block 25-Pair A Line RPT

W1 Series Blocks



W1 Series Wire Terminal Blocks

Emerson W1 series terminal blocks are utilized in building terminals. Capacities range from 6 pair to 25 pair in protected and unprotected versions. Protected versions include a 1300 series protector that encloses the entire arrester within the terminal block shell and protects it against the environment.

These terminal blocks are supplied without cable stubs and are used as a connecting block by means of a double-nut and washer stack-up for direct wire connection.

The terminals are solder-plated red brass positioned in a resin-filled plastic shell. The protected blocks are all supplied with a grounding stud.

The W1 series wire terminal blocks can be enclosed in 5600 series building terminal boxes.

Emerson Network Power

Item No.	EMBARQ Item No.	Mfg. Part No.	Description
7725740149	772574	W16P	Wire Terminal Block W1-6P
7720790149	772079	W112	Wire Terminal Block-UNP W1-12 12-Pair
7725780149	772578	W118	Wire Terminal Block-UNP W1-18 18-Pair
7725650149	772565	W125P	Wire Terminal Block W1-25P

VERSABLOCK



VERSABLOCK Series Rotating Terminal Blocks

Corning Versablocks are a family of rotating connecting blocks that offer termination arrangements configured for decimal and octal pair count applications. This product family is intended for use on central office frames, PABX frames, or any other application where a compact terminal block is needed. A variety of cross connect terminal counts is available up to 128 pairs.

Corning Cable Systems LLC

Item No.	EMBARQ Item No.	Mfg. Part No.	Description
0027600166	002760	A0337622	VERSABLOCK 100-Pair Non-Connector B
7730690166	773069	A0337624	VERSABLOCK 120-Pair Non-Connector S
0000094854		A0337929	VERSABLOCK 2-50 PIN Connector
0000094853		A0337922	VERSABLOCK 4-64 PIN Connector



Terminal Blocks



InSealator Terminal Block

The InSealator utilizes insulation displacement (IDC) technology to make contact with the individual conductors. This is accomplished by simply inserting the service wire into the appropriate port and tightening the terminal screw with a standard 216-type tool. The service wire is forced onto a split beam contact which precisely penetrates the insulation, thereby indenting the conductor and creating a gas tight contact. The InSealator also encapsulates the service wire drops in a moisture resistant sealant for protection against corrosion. Through insulation displacement and encapsulation, the termination is environmentally sealed, exceeding the submersion requirement in Bellcore specification TR-NWT-000975.

The InSealator sealed terminal block was designed to satisfy the evolving telco requirements to protect outside plant terminations from the harmful effects of corrosion and moisture migration. The InSealator series used in pedestal, pole-mount, cross-connect and aerial closure applications, provides a termination point for service wire drops.

Emerson Network Power

Item No.	Mfg. Part No.	Description
0000089770	RPIS6W4	InSealator Sealed IDC Terminal Block 6-Pair
0000089769	RPIS12W4	InSealator Sealed IDC Terminal Block 12-Pair
0000026888	RPIS25A4	InSealator Sealed IDC Terminal Block 25-Pair
0000043260	RPIS25W25	InSealator Sealed IDC Terminal Block 25-Pair



Pedestal Terminal Block

- Tool-less operation
- 15-year proven design in outside plant market
- Transparent wire receivers allow visual confirmation of proper wire insertion and IDC contact before a connection is made
- “Quiet front” design and easy test access eliminates shorts and the need for disconnection during circuit testing
- Accommodates most wire designs with conductor sizes between 26 AWG – 22 AWG (0.4mm – 0.63mm)

PREMIER

Item No.	EMBARQ Item No.	Mfg. Part No.	Description
0000161386	068174	PT-5P Ped Term Blk	5-Pair Pedestal Terminal Block
0000161384	068175	PT-10P Ped Term Blk	10-Pair Pedestal Terminal Block
0000161385	068176	PT-25P Ped Term Blk	25-Pair Pedestal Terminal Block

Pedestal Terminal Block – D Terminator 2 PTB/PTP/PTX

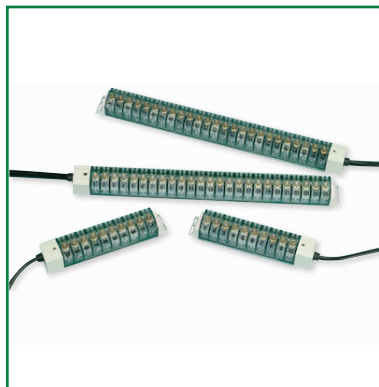
The D Terminator 2 PTB pedestal mounted terminal system utilizes Raychem’s Gel Guard technology to environmentally protect the wire connections. The PTB offers enhanced characteristics with a versatile mounting system suitable for attachment to any pedestal faceplate.

Tyco Electronics

Item No.	EMBARQ Item No.	Mfg. Part No.	Description
0000047484		264795-000	Terminal Block D Terminator 6-Pair
0276140515	027614	438891-000	Terminal Block D Terminator 10-Pair
5343790515	534379	524891-000	Terminal Block D Terminator 25-Pair



Terminal Blocks



3M™ ATS/TR Terminal Blocks

3M's dual IDC, ATS/TR right entry multi-pair terminal block, which accommodates drops ranging from 18 AWG to 24 AWG (1.0 mm - 0.5mm), with 4-foot aircore cable for pedestal applications.

3M Telecom Systems Division

Item No.	EMBARQ Item No.	Mfg. Part No.	Description
0000103406	068174	ID05RTNNGG040ASD-TR	Terminal Block 5-Pair Ped IDC Right
0000103408	068175	ID10LTNNGG040ASD-TR	Terminal Block 10-Pair Ped IDC Left
0000103411	068176	ID25LTNNGG040ASD-TR	Terminal Block 25-Pair Ped IDC Left

MultiPort Terminal



OptiSheath 4- and 12-Port MultiPort Terminal

OptiSheath™ MultiPort Terminal

The OptiSheath™ MultiPort Terminal is designed for use in outside plant fiber access networks. This innovative terminal provides sealed environmental protection and fast, easy incremental connection of subscriber drop cables to increase deployment velocity. Its reliability and flexibility make it the ideal choice for network access point terminals in fiber-to-the-home (FTTH) deployments.

Corning Cable Systems LLC

Mfg. Part No.	Description
MOB-0444FDxxx-FWP	MultiPort Terminal with 4 OptiFit® Drop Cable Assembly Adapters, SST Flat Drop Dielectric Cable, Single-Mode SC APC Connectors, xxx ft of Cable
MOB-0444TDxxx-FWP	MultiPort Terminal with 4 OptiFit Drop Cable Assembly Adapters, SST Toneable Drop Dielectric Cable, Single-Mode SC APC Connectors, xxx ft of Cable
MOB-0644FDxxx-FWP	MultiPort Terminal with 6 OptiFit Drop Cable Assembly Adapters, SST Flat Drop Dielectric Cable, Single-Mode SC APC Connectors, xxx ft of Cable
MOB-0644TDxxx-FWP	MultiPort Terminal with 6 OptiFit Drop Cable Assembly Adapters, SST Toneable Drop Dielectric Cable, Single-Mode SC APC Connectors, xxx ft of Cable
MOB-1244FDxxx-FWP	MultiPort Terminal with 12 OptiFit Drop Cable Assembly Adapters, SST Flat Drop Dielectric Cable, Single-Mode SC APC connectors, xxx ft of cable
MOB-1244TDxxx-FWP	MultiPort Terminal with 12 OptiFit Drop Cable Assembly Adapters, SST Toneable Drop Dielectric Cable, Single-Mode SC APC Connectors, xxx ft of Cable

MultiPort Terminal



OmniReach Multiport Service Terminal (MST)

The OmniReach™ Multiport Service Terminal (MST)

ADC's OmniReach FTTX Solutions are the industry's first infrastructure solutions designed from the ground up to meet the unique requirements of FTTX networks. Designed for operational efficiency and scalability, OmniReach solutions simplify FTTX network installation, maintenance and management from the central office/headed to the outside plant.

The OmniReach Multiport Service Terminal (MST) incorporates hardened connector technology that is designed to withstand the rugged outside plant environment. These uniquely designed hardened connectors are factory-terminated and environmentally sealed for use in drop cable deployments in optical access networks.

MST Benefits:

- Robust environmental performance—Withstands extremes in temperature and conditions
- Technician-friendly features—Intuitive design for ease of use
- Decreased installation and incremental maintenance hours—Significant savings
- Protection—Self-contained unit features hardened connectors for superior durability and reliability in the drop segment of the network
- Compatibility—Interoperability with industry standard hardened connectors

ADC

Mfg. Part No.	Description
MST-04MH00-AXXXU	4-Port MST with Dielectric Flat Cable
MST-04MH00-BXXXU	4-Port MST with Locatable Cable
MST-04MH00-CXXXU	4-Port MST with Armored Cable
MST-06MH00-AXXXU	6-Port MST with Dielectric Flat Cable
MST-06MH00-BXXXU	6-Port MST with Locatable Cable
MST-06MH00-CXXXU	6-Port MST with Armored Cable
MST-08MH00-CXXXXU	8-Port MST with Armored Cable
MST-08MH00-AXXXU	8-Port MST with Dielectric Flat Cable
MST-08MH00-BXXXU	8-Port MST with Locatable Cable
MST-12MH00-CXXXXU	12-Port MST with Armored Cable
MST-12MH00-AXXXU	12-Port MST with Dielectric Flat Cable
MST-12MH00-BXXXXU	12-Port MST with Locatable Cable

XXXX= Stub Length

0050 50 Feet	0750 750 Feet
0100 100 Feet	1000 1000 Feet
0250 250 Feet	1500 1500 Feet
0500 500 Feet	2000 2000 Feet

