

Telephones-Corded

PREMIER® carries a broad portfolio of Corded Telephones. Our manufacturer list includes:

- ▶ PREMIER
- ▶ GE Thomson
- ▶ Uniden

Corded Phones, 2500 Desk / 2554 Wall



PREMIER 2500 Desk Phone

PREMIER Basic 2500 Desk Telephone

PREMIER 2500 desk phones from EMBARQ & PREMIER Products use industry interchangeable parts and have a 5 year warranty.

- Fully modular
- FCC registered
- Receiver volume control
- Hearing aid compatible
- Complete interchangeability with industry standard piece parts
- Soft-touch DTMF dial
- Provision for A-lead control
- Double gong ringer
- 12-ft. handset cord included with every modular desk phone
- Soft rubber non-skid feet

PREMIER

Item No.	Mfg. Part No.	Description
4723657521	250044-MBA-20M-H	PREMIER Model 2500 Basic Single-Line Desk Telephone - Ash
4723577521	250000-MBA-20M-H	PREMIER Model 2500 Basic Single-Line Desk Telephone - Black
4723637521	250015-MBA-20M-H	PREMIER Model 2500 Basic Single-Line Desk Telephone - White
4723597521	250009-MBA-20M-H	PREMIER Model 2500 Basic Single-Line Desk Telephone - Ivory
4720467521	250047-MBA-20M-H	PREMIER Model 2500 Basic Single-Line Desk Telephone - Red

Corded Phones, 2500 Desk / 2554 Wall



PREMIER Plus Telephones



PREMIER Plus 2500 with 90 Volt Message Waiting in the Faceplate, Ash

PREMIER® Plus 2500 Desk Telephones with 90 Volt Message Waiting in the Faceplate

- Message waiting
- Fully modular
- FCC registered
- Receiver volume control
- Hearing aid compatible
- Industry standard replacement parts available
- Soft-touch DTMF dial
- Provision for A-lead control
- Double gong ringer
- Clear faceplate with mat on desk models
- 12-ft. handset cord included with every modular phone
- 7-ft. line cord included with every modular desk phone
- Soft rubber non-skid feet

PREMIER

Item No.	Mfg. Part No.	Description
4712937521	250044-MBA-27P-CH	PREMIER Plus Model 2500 Desk Phone with Message Waiting Light in the Faceplate - Ash



PREMIER Plus 2500 Desk Phone with Message Waiting Light and Flash

PREMIER Plus 2500 Message Waiting and Flash Button

- Transfer access
- Message waiting
- Fully modular
- FCC registered
- Receiver volume control
- Hearing aid compatible
- Industry standard replacement parts available
- Soft-touch DTMF dial
- Provision for A-lead control
- Double gong ringer
- Clear faceplate with mat on desk models
- 12-ft. handset cord included with every modular phone
- 7-ft. line cord included with every modular desk phone
- Soft rubber non-skid feet

PREMIER

Item No.	Mfg. Part No.	Description
4718487521	250044-MBA-27F-CH	PREMIER Plus Model 2500 Desk Phone with Flash and 90 V. Message Waiting Light - Ash

Corded Phones, 2500 Desk / 2554 Wall



PREMIER Plus 2500 Desk Phone with Flash in Ash

PREMIER® Plus 2500 Desk Telephone with Flash Button

- Transfer access
- Fully modular
- FCC registered
- Receiver volume control
- Hearing aid compatible
- Industry standard replacement parts available
- Soft-touch DTMF dial
- Provision for A-lead control
- Double gong ringer
- Clear faceplate with mat on desk models
- 12-ft. handset cord included with every modular phone
- 7-ft. line cord included with every modular desk phone
- Soft rubber non-skid feet

PREMIER

Item No.	Mfg. Part No.	Description
4717917521	250044-MBA-20F-CH	PREMIER Plus Model 2500 Desk Phone with Flash - Ash



PREMIER Plus 2500 Desk Phone with 90 Volt Message Waiting Light

PREMIER Plus 2500 Hotel/Motel Desk Phones, Message Waiting, Quarter Modular

PREMIER Plus 2500 hotel/motel desk phones with 90 volt message waiting light.

- Message waiting
- Quarter modular with a clear faceplate
- Red neon 90 volt message waiting lamp on the housing
- 9-ft. line cord
- 12-ft. handset cord

PREMIER

Item No.	Mfg. Part No.	Description
4727567521	250044-QBA-27M-CH	PREMIER Plus Model 2500 Desk Phone with 90 V. Neon Red Message Waiting Light in Housing - Ash
4727477521	250009-QBA-27M-CH	PREMIER Plus Model 2500 Desk Phone with 90 V. Neon Red Message Waiting Light in Housing - Ivory

Corded Phones, 2500 Desk / 2554 Wall



PREMIER Plus 2500 with Message Waiting in Ash, Fully Modular

PREMIER® Plus 2500 Hotel/Motel Desk Phones, Message Waiting, Fully Modular

- Message waiting
- Fully modular with a clear faceplate
- Red neon 90 volt message waiting lamp on the housing
- 14-ft. line cord
- 12-ft. handset cord

PREMIER

Item No.	Mfg. Part No.	Description
4723897521	250044-MBA-27M-CH-14	PREMIER Plus Model 2500 Hotel/Motel Telephone - Ash



PREMIER Plus 2500 Desk Phone with Message Waiting Light and Data Jack

PREMIER Plus 2500 Hotel/Motel Desk Phones, Message Waiting, Modular, Data Jack

- Message waiting
- Quarter modular with a clear faceplate
- Red neon 90 volt message waiting lamp on the housing
- 14-ft. line cord
- 12-ft. handset cord
- Equipped with an RJ11C jack in the side of the phone for data, modular extension ringers, modular answering machines, portable data terminals or fax machines

PREMIER

Item No.	Mfg. Part No.	Description
4778797521	250044-MBA 27M-DCH-1	PREMIER Plus Model 2500 Hotel/Motel Telephone - Ash
4495017521	250044-QBA-27M-DCH-1	PREMIER Plus Model 2500 Hotel/Motel Telephone - Ash

Corded Phones, 2500 Desk / 2554 Wall



PREMIER 2554 Wall Phone

PREMIER® 2554 Basic Single-Line Wall Telephone

- Fully modular
- FCC registered
- Receiver volume control
- Hearing aid compatible
- Industry standard replacement parts available
- Soft-touch DTMF dial
- Provision for A-lead control
- Single gong ringer
- 12-ft. handset cord included with every modular phone
- Soft rubber non-skid feet
- Standard transmission network

PREMIER

Item No.	Mfg. Part No.	Description
4733767521	255444-MBA-20M-H	PREMIER Model 2554 Basic Single-Line Wall Telephone - Ash
4733737521	255400-MBA-20M-H	PREMIER Model 2554 Basic Single-Line Wall Telephone - Black
4733757521	255413-MBA-20M-H	PREMIER Model 2554 Basic Single-Line Wall Telephone - Beige
4733747521	255409-MBA-20M-H	PREMIER Model 2554 Basic Single-Line Wall Telephone - Ivory
4733797521	255415-MBA-20M-H	PREMIER Model 2554 Basic Single-Line Wall Telephone - White
4733317521	255447-MBA-20M-H	PREMIER Model 2554 Basic Single-Line Wall Telephone - Red



PREMIER Plus Wall Phone with Flash in Ash

PREMIER Plus Single-Line Telephones

- Transfer access
- Fully modular
- FCC registered
- Receiver volume control
- Hearing aid compatible
- Industry standard replacement parts available
- Soft-touch DTMF dial
- Provision for A-lead control
- Single gong ringer
- Clear faceplate with mat on desk models
- 12-ft. handset cord included with every modular phone
- 7-ft. line cord included with every modular desk phone
- Soft rubber non-skid feet

PREMIER

Item No.	Mfg. Part No.	Description
4738517521	255444-MBA-20F-H	PREMIER Plus Model 2554 Wall Phone with Flash - Ash

Corded Phones, 2500 Desk / 2554 Wall



PREMIER Plus 2554 Wall Phone with 90 Volt Message Waiting and Flash

PREMIER® Plus Single-Line Telephones

- Transfer access
- Message waiting
- Fully modular
- FCC registered
- Receiver volume control
- Hearing aid compatible
- Industry standard replacement parts available
- Soft-touch DTMF dial
- Provisions for A-lead control
- Single gong ringer
- Clear faceplate with mat on desk models
- 12-ft. handset cord included with every modular phone
- 7-ft. line cord included with every modular desk phone
- Soft rubber non-skid feet

PREMIER

Item No.	Mfg. Part No.	Description
4738627521	255444-MBA-27F-H	PREMIER Plus Model 2554 Wall Phone with Flash and 90 Volt Message Waiting in the faceplate - Ash

PREMIER Basic 2500 No Dial, Courtesy Telephones



PREMIER 2500 Desk Courtesy Phone in Ash



PREMIER 2554 Wall Courtesy Phone in Ash

PREMIER 2500 desk/2554 wall phones without dial



PREMIER 2500 Desk Courtesy Phone in Red



PREMIER 2554 Wall Courtesy Phone in Red

PREMIER

Item No.	Mfg. Part No.	Description
0000113592	250044-MBA-NODIAL-H	PREMIER Model 2500 Corded Desk Phone Without Dial - Ash
0000113594	255444-MBA-NODIAL-H	PREMIER Model 2554 Corded Wall Phone Without Dial - Ash
0000113593	250047-MBA-NODIAL-H	PREMIER Model 2500 Corded Desk Phone Without Dial - Red
0000113595	255447-MBA-NODIAL-H	PREMIER Model 2554 Corded Wall Phone Without Dial - Red

Corded Phones, Single-Line Basic Phones



PREMIER Delight V Model 2910 Slimline

PREMIER® Delight V Model 2910 Telephones

PREMIER Delight V model 2910 lighted dial-in-handset phones are great for business, hospital or residential applications.

- Redial
- Tone/pulse switch
- Lighted dial
- On-off ringer
- Receiver volume control
- Flash
- Electric ringer
- Desk and wall mountable

PREMIER

Item No.	Mfg. Part No.	Description
4720027501	2910-44	PREMIER Model 2910 Delight V Slimline Corded Phone - Ash
4720047501	PT-2910-15	PREMIER Model 2910 Delight V Slimline Corded Phone - White



GE Thomson Model 29257GE1 Slimline - White

- 10 number memory
- One touch redial
- Flash
- Handset volume control
- Ringer volume control
- Desk or wall mountable

PREMIER

Item No.	Mfg. Part No.	Description
0000099307	29257GE1	GE Thomson Model 29257GE1 Slimline - White



GE Thomson 29322GE1 Single-Line Speaker Phone

- Speakerphone
- Auto Transfer to Handset
- Volume Control
- One-Touch Redial
- Flash Function
- Mute
- Hearing Aid Compatible

PREMIER

Item No.	Mfg. Part No.	Description
0000169527	29322GE1	Single-Line Model 29322GE1 Speaker Phone

Corded Phones, Single-Line Caller ID Phones



GE Thomson 29369

GE Big Button Corded Phone

- Caller ID
- Speakerphone
- Large easy to read buttons
- Three one touch memory dial buttons
- Redial
- Handset volume control
- Flash
- Ringer volume control
- Desk or wall mountable

PREMIER®

Item No.	Mfg. Part No.	Description
0000120870	29369GE1	GE Big Button Memory Telephone



GE Thomson 29267GE1 Slimline Phone

- Call-Waiting Caller ID
- 50 Name and Number Memory
- Automatic Date & Time Set
- Handset Volume Control
- Ringer Volume Control
- Display Contrast Adjustment
- 10 Number Memory
- One-Touch Redial
- Dial Back Function
- Flash Function
- Tone/Pulse Switchable Dialing

PREMIER

Item No.	Mfg. Part No.	Description
0000148346	29267GE1	Slimline Phone with Call Waiting Caller ID



GE Thomson Model 29263GE1 Slimline Phone

- Caller ID
- 10 Number Memory

PREMIER

Item No.	Mfg. Part No.	Description
0000111060	29263GE1	GE Thomson Model 29263GE1 Slimline - White
0000111061	29263GE2	GE Thomson Model 29263GE2 Slimline - Black

Corded Phones, Single-Line Business/Hospitality

PREMIER® Series 7000 Phones

The PREMIER single-line and two-line phones with all functions of a real workhorse embodied in a sleek style that is great for business or hospitality applications. Time-tested features include a convenient data port for today's computer savvy customers; an amber neon 90-volt message waiting light ensures that messages are instantly noticed; and ample space is provided for a customized facemat.



PREMIER 7010



PREMIER 7020

- 90 volt message wait lamp
- Receiver volume control
- Data jack



PREMIER 7030



PREMIER 7150 Speakerphone



PREMIER 7150 Speakerphone in Black



PREMIER 7155H Speakerphone with 5 Horizontal Memory Buttons



PREMIER 7040 Courtesy Lobby Phone

PREMIER

Item No.	Mfg. Part No.	Description
4760007521	701088-MSE-DCHAC A.0	PREMIER 7010 Corded Single-Line Basic Phone - Natural Color
4760027521	702088-MSE-DCHAC A.0	PREMIER 7020 Corded Single-Line Enhanced Phone - Natural Color, Hold, Flash, Redial
4760057521	703088MSEDCHAC V4.2L	PREMIER 7030 Corded Single-Line Enhanced Phone - Natural Color, Hold, Flash, Redial
4760247521	715088-MSEDCHAC V4.2	PREMIER 7150 Corded Single-Line Speakerphone - Natural Color, Mute, Hold, Flash, Redial
4760927521	715000-MSE-DCHAC A.0	PREMIER 7150 Corded Single-Line Speakerphone - Charcoal Color, Mute, Hold, Flash, Redial
000095072	715588-MSE-DCHAC-HZ	PREMIER 7155H Corded Single-Line Speakerphone - Natural Color, Mute, Hold, Flash, Redial
0000111105	704088-MSE-DCHAC	PREMIER 7040 Corded Single-Line Lobby/Courtesy Phone - Natural Color, No dial for use with External Dialer

Corded Phones, Multi-Line Business/Hospitality

PREMIER® Series 7000 Phones

The PREMIER single-line and two-line phones with all functions of a real workhorse embodied in a sleek style that is great for business or hospitality applications. Time-tested features include a convenient data port for today's computer savvy customers; an amber neon 90-volt message waiting light ensures that messages are instantly noticed; and ample space is provided for a customized facemat.



PREMIER 7260 Basic Two Line

- 2 line phone
- 90 volt message wait light
- Receiver volume control
- Data jack



PREMIER 7270 Two Line Speakerphone with 10 Memory Button Phone in Natural Color



PREMIER 7270 Two Line Speaker with 10 Memory Buttons in Black

PREMIER

Item No.	Mfg. Part No.	Description
4760307521	726088-MDE-DCHAC A.0	PREMIER 7260 Corded 2-Line Basic Phone - Natural Color
4760387521	727088-MDE-DCHAC A.0	PREMIER 7270 Corded 2-Line Speakerphone - 10 Memory Buttons - 90VDC Message Waiting - Flash/Redial/Mute/Hold - Handset/Speakerphone Volume Control - Data Jack - Line Powered - Natural Color - For Hospitality/Business Applications
4760937521	727000-MDE-DCHAC A.0	PREMIER 7270 Corded 2-Line Speakerphone - 10 Memory Buttons - 90VDC Message Waiting - Flash/Redial/Mute/Hold - Handset/Speakerphone Volume Control - Data Jack - Line Powered - Charcoal Color - For Hospitality/Business Applications

Corded Phones, Multi-Line



GE Thomson 2-Line Phone

GE Thomson 29480GE1 2-Line Corded Phone

- 2-Line
- 10 number memory
- 3-way call conferencing
- Distinctive ring
- Line in use indicators

PREMIER®

Item No.	Mfg. Part No.	Description
000096016	29480GE1	GE Thomson Model 29480GE1 2-Line Corded Telephone



GE Thomson 2-Line Phone

GE Thomson 29484GE2 2-Line Corded Phone

- Distinctive Ring & Line-In-Use indicators for each line
- Data Port
- Speakerphone
- Auto Transfer to Handset
- Volume Control
- Ringer Volume Control
- Display Contrast Adjustment
- 16 Number Memory
- One-Touch Redial

PREMIER

Item No.	Mfg. Part No.	Description
0000169528	29484GE2	GE Thomson Model 29484GE2 2-Line Corded Telephone

Corded Phones, Multi-Line



GE Thomson 2-Line CWCID Speakerphone

GE Thomson 25202RE3 2-Line Corded CWCID Speakerphone

- 2-Line speakerphone
- Call-waiting caller ID
- Distinctive ring
- Line-in-use indicators for each line
- Caller ID with 99 name and number memory
- Hands free dialing and auto transfer to handset
- Memory directory
- Easy to read 4-line LCD display with joy control forward/reverse call review with delete function
- Forward/reverse call review with delete function
- 16-number instant-access memory and 50 name and number
- Speakerphone, handset and ringer volume controls
- 2-Line call conferencing

PREMIER®

Item No.	Mfg. Part No.	Description
0000100461	25202RE3	GE Thomson Model 25202RE3 2-Line Corded Speakerphone - Silver



25414RE3

GE Thomson 25414RE3 4-Line System with Cordless Expandability



H5400RE3

- 4-line
- Expands to 16 stations
- Speakerphone
- Call waiting caller ID
- Intercom page and transfer
- 16 one touch memory dial
- Dedicated cordless option

PREMIER

Item No.	Mfg. Part No.	Description
0000124616	25414RE3	GE 4-Line System Expands to 16 Stations, Corded Base
0000124621	H5400RE3	GE Extra Cordless Expansion Handset for 4-Line System

Telephones-Cordless

PREMIER® carries a broad portfolio of Cordless Telephones. Our manufacturer list includes:

- ▶ PREMIER
- ▶ GE Thomson
- ▶ Uniden

Cordless Phones, Single-Line

6.0 DECT

GE Thomson DECT 6.0 Cordless Phones



28111EE2



28110EE1

- DECT 6.0 Interference Free Technology
- Expandable Up to 4 Handsets
- Handset Speakerphone
- Call Waiting Caller ID
- Melody Ring Tones – Customize Individual Handset Ring Tone
- VIP Ring Tones – Assign Ring Tones to Numbers Stored in Memory
- Intercom – Allows 2-way Conversation Between Handsets
- Room monitor
- 3-Way Call Conferencing – Permits 3 Parties to be Linked Together for Conference Calls
- Encrypted Security

PREMIER

Item No.	Mfg. Part No.	Description
0000174143	28111EE2	GE Thomson DECT 6.0 Expandable Cordless System with CWCID and Extra Handset
0000174142	28110EE1	GE Thomson DECT 6.0 Accessory Handset and Charger for 28111 Models

Cordless Phones, Single-Line

6.0 DECT

Uniden DECT 6.0 Cordless Phones

- DECT 6.0 Interference Free Technology
- Whole House Expandable
 - Use up to 4 Bases (DECT1060) with up to 6 Handsets (DCX100) for Each Base
- 100 Name Phonebook
- Transfer Phonebook Memory Between Handsets
- Call Waiting Caller ID
- Handset Speakerphone
- Intercom and Transfer Calls between Handsets
- 10 Handset Ring Tones (6 melodies)
- Personal Ring Feature
- Up to 16 Hours of Talk Time



Uniden DECT1060-2



Uniden DECT1060



Uniden DCX100

PREMIER®

Item No.	Mfg. Part No.	Description
0000174070	DECT1060-2	Uniden DECT 6.0 Expandable Cordless System and CWCID with Extra Handset
0000174069	DECT1060	Uniden DECT 6.0 Expandable Cordless System with CWCID
0000174068	DCX100	Uniden DECT 6.0 Accessory Handset and Charger for the DECT10 Series

Cordless Phones, Single-Line

5.8 GHz

GE Thomson 5.8 GHz Digital Cordless Phones



28021EE1

- Call Waiting Caller ID
- Handset Speakerphone
- Melody Ring Tones



28021EE2



28021EE3

- Expandable Up to 4 Handsets
- Do Not Disturb

PREMIER®

Item No.	Mfg. Part No.	Description
0000174139	28021EE1	GE Thomson Digital 5.8 GHz Expandable Cordless System with CWCID and Handset Speakerphone
0000174140	28021EE2	GE Thomson Digital 5.8 GHz Expandable Cordless System with CWCID, Handset Speakerphone and Extra Handset
0000174141	28021EE3	GE Thomson Digital 5.8 GHz Expandable Cordless System with CWCID, Handset Speakerphone and 2 Extra Handsets

Uniden 5.8GHz Digital T93 Series

- 5.8GHZ Digital FHSS Technology
- Expandable up to 10 Handsets
- Handset Speakerphone

- Intercom & Transfer Between Handsets
- Call Waiting Caller ID
- 70 Name Phonebook

- VoiceMail Waiting Indicator
- 7 Ring Tones & 4 Melodies
- Personal Ring Feature



Uniden TRU9360



Uniden TRU9360-2



Uniden TCX930

PREMIER

Item No.	Mfg. Part No.	Description
0000174082	TRU9360	Uniden 5.8GHz Expandable Cordless System with CWCID
0000174083	TRU9360-2	Uniden 5.8GHz Expandable Cordless System with CWCID and Extra Handset
0000174081	TCX930	Uniden 5.8 GHz Accessory Handset and Charger for the T93 Series

Cordless Phones, Single-Line

5.8 GHz

GE Thomson 5.8 GHz Analog Cordless Phones



25932EE1

- Call Waiting Caller ID
- Handset Speakerphone
- VIP Ring Tones



25932EE2



25932EE3

- Expandable Up to 4 Handsets
- Visual Ring Indicator

PREMIER®

Item No.	Mfg. Part No.	Description
0000174134	25932EE1	GE Thomson Analog 5.8 GHz Expandable Cordless System with CWCID, Handset Speakerphone and Visual Ring Indicator
0000174135	25932EE2	GE Thomson Analog 5.8 GHz Expandable Cordless System with CWCID, Handset Speakerphone, Visual Ring Indicator and Extra Handset
0000174136	25932EE3	GE Thomson Analog 5.8 GHz Expandable Cordless System with CWCID, Handset Speakerphone, Visual Ring Indicator and 2 Extra Handsets

GE Thomson 5.8 GHz Analog Dual Handset Cordless Phones



25922GE1



25922GE2

- Call Waiting Caller ID
- Visual Ring Indicator
- Handset Volume Control

PREMIER

Item No.	Mfg. Part No.	Description
0000174132	25922GE1	GE Thomson Analog 5.8GHz Cordless System with CWCID and Visual Ring Indicator
0000174133	25922GE2	GE Thomson Analog 5.8GHz Cordless System with CWCID, Visual Ring Indicator and Extra Handset

Cordless Phones, Single-Line

2.4 GHz

Uniden 2.4GHz DCT73 Digital Series Cordless with Digital Answering System from PREMIER®



Uniden DCT738-2



Uniden DCX730

- Expandable System up to 4 Handsets
- Call Waiting Caller ID
- DirectLink™ 2-way Radio Feature
- 100 Number Shared Caller ID/Phonebook memoryDynamic Memory Locations
- Room/Baby Monitoring
- Speakerphone on Base and Handset
- 20 Ring Tone Options
- Personal Ring Feature
- Last 3 Number Redial

PREMIER

Item No.	Mfg. Part No.	Description
0000174067	DCT738-2	Uniden 2.4 GHz Digital Expandable Cordless System with Digital Answering System and CWCID
0000172512	DCX730	Uniden 2.4Ghz Accessory Handset & Charger for DCT73 Series Expandable Cordless System (also compatible with DCT64, DCT74 and DCT75 Series)

GE Thomson 2.4 GHz Analog Dual Handset Cordless Phones



27831FE2



27831GE2

- Call Waiting Caller ID
- 40 Name/Number CID Log
- 3-Line Backlit LCD
- Flash Function

PREMIER

Item No.	Mfg. Part No.	Description
0000174137	27831FE2	GE Thomson Analog 2.4 GHz Dual Handset System with CWCID Black
0000174138	27831GE2	GE Thomson Analog 2.4 GHz Dual Handset System with CWCID White

Cordless Phones, Single-Line

2.4 GHz

Uniden 2.4GHz Analog Cordless Phones with Digital Answering System from PREMIER®

- Call waiting caller ID
- 30 number caller ID memory
- 10 number phonebook memory
- New message LED indicator
- Dial from caller ID
- Ringer volume control
- Ringer off setting
- Hearing aid compatible
- Last number redial
- Wall mountable



Uniden EXAi4580



Uniden EXAi4581



Uniden DXAi4588-2

PREMIER

Item No.	Mfg. Part No.	Description
0000174075	EXAi4580	Uniden 2.4 GHz Analog Extended Range Compact Cordless with Digital Answering System and CWCID White
0000174076	EXAi4581	Uniden 2.4 GHz Analog Extended Range Compact Cordless with Digital Answering System and CWCID Black
0000174073	DXAi4588-2	Uniden 2.4 GHz Analog Extended Range Compact Dual Handset Cordless with Digital Answering System - CWCID and extra Handset White

Cordless Phones, Single-Line

2.4 GHz

Uniden 2.4GHz Analog Extended Range Compact Cordless Phones



Uniden EXP4540



Uniden EXP4541

- 10 number phonebook memory
- Ringer volume control
- Hearing aid compatible
- Last number redial
- Wall mountable



Uniden EXi4560



Uniden EXi4561



Uniden DXi4560-2

PREMIER®

Item No.	Mfg. Part No.	Description
0000174079	EXP4540	Uniden 2.4 GHz Analog Extended Range Compact Cordless with 10-number Memory Dialing White
0000174080	EXP4541	Uniden 2.4 GHz Analog Extended Range Compact Cordless with 10-number Memory Dialing Black
0000174077	EXi4560	Uniden 2.4 GHz Analog Extended Range Compact Cordless with CWCID White
0000174078	EXi4561	Uniden 2.4 GHz Analog Extended Range Compact Cordless with CWCID Black
0000174074	DXi4560-2	Uniden 2.4 GHz Analog Extended Range Compact Dual Handset Cordless with CWCID and Extra Handset

Cordless Phones, Single-Line

900 MHz



Uniden EZI996

Uniden 900MHz Cordless Phones

- Big buttons
- Large caller ID display
- One touch emergency dial
- 20 caller ID number memory
- Large flashing visual ringer
- Headset compatible
- Wall mountable

PREMIER®

Item No.	Mfg. Part No.	Description
000090015	EZi996	Uniden Cordless Big Button Large Cidcw Display One Touch Emergency Dial 30 Caller ID Number Memory

Uniden Cordless Accessories

PREMIER

Item No.	Mfg. Part No.	Description
0000102092	BP800	Uniden Battery For EXi5160 EXAi5180 DXi5186-2 DXAi5188-2
0000102093	BP904	Uniden Battery For EXP970 And EXP971
0000102094	BP909	Uniden Battery For WXi377
0000120601	CS100-1	Uniden headset with 2.5 connector fits all Uniden Headset Compatible Telephone Models
0000102091	BP446	Uniden Battery For DCT646 DCT646-2 DCT6465 DCT6465-2 DCT648 DCT648-2 DCT6485 DCT6485-2 DCX640 TRU8860 TRU8860-2 TRU8865 TRU8865-2 TRU8880-2 TRU8885 TRU8885-2 TRU8866 TRU8888 TCX800 TCX860
4761607501	BP905	Uniden Battery Pack, works with EXi976, EXi976C, EXAi978, EXAi978i, DXi986-2, EZi996, EXP4240, EXP4241, EXi4246, EXi4246C, EXAi4248, EXAi4248i, DXi4266-2 and DXAi4288-2. Same as BT905 - also known as BBTY0414001

Telephones & Accessories

Cordless Phones, Multi Line



25414RE3

GE Thomson Cordless Phones



H5400RE3

- 4-line
- Expands to 16 stations
- Speakerphone
- Call waiting caller ID
- Intercom page and transfer
- 16 one touch memory dial
- Dedicated cordless option

PREMIER®

Item No.	Mfg. Part No.	Description
0000124616	25414RE3	GE 4-Line System Expands to 16 Stations, Corded Base
0000124621	H5400RE3	GE Extra Cordless Expansion Handset for 4-Line System

Telephone Peripherals

Caller ID Adjuncts



Questra 5050 Call Wait Caller ID Adjunct

Aastra 5050 Call Wait Caller ID Adjunct

The Aastra 5050 call wait caller ID adjunct from PREMIER has a 4-line LCD display with name, number date and time, has a FSK or stutter detect voice mail message waiting indication, 56 number call log capacity, and AC adapter included.

- Displays name, number, date and time
- Sequential call waiting caller ID
- Voice mail message waiting FSK/stutter detect light
- 56 call log capacity
- AC adapter included

PREMIER

Item No.	Mfg. Part No.	Description
4850487564	5050 - NO LOGO	Type II Questra Call Wait Caller ID Unit



Classco VA9900CW
Voice Announce Call Wait Caller ID Unit

Classco VoiceAnnounce 9900CW Call Wait Caller ID Adjunct

The Classco 9900CW announces calls over its built-in speaker.

- Announces caller's 10-digit telephone number or recorded name
- Easy one-touch name recording for up to 50 callers
- Visual and audible FSK and stuttered detect message waiting/voice mail indicator
- English and Spanish
- AC power adapter included

PREMIER

Item No.	Mfg. Part No.	Description
4850997500	VA9900CW	Voice Announcer Caller ID Unit - Type II Call Wait Caller Id

Telephone Repair Parts

Series 7000

Handset Assembly for PREMIER® Series 7000 Phones

PREMIER

Item No.	Mfg. Part No.	Description
4691107501	NS-P-H021-88	Handset Assembly Less Cord For 7000-Natural
4610607501	NS-P-H021-00	Handset Assembly Less Cord For 7000-Black



PREMIER

Item No.	Mfg. Part No.	Description
4610017501	7010 FACEMAT	Paper Facemats for PREMIER 7010 7020 7050 Pk 50
4615507501	NS-P-A005	White Paper Facemat For 7010/7020/7050 - Pkg 50
4610077501	NS-P-A009	Paper Facemat For 7030/7150 Pk/50
4615527501	NS-P-A006	White Paper Facemat For 7030/7150 - Pkg 50
0000118231	NS-P-A022	Paper Facemat For PREMIER Model 7155H - Pk/50
4610097501	NS-P-A011	Paper Facemat For 7260 Pk/50
4610137501	NS-P-A013	Paper Facemat For 7270 Pk/50

Series 7000



Make Custom Facemats with DESI Brand Facemat Software for PREMIER Series 7000 Phones and DESI Facemat Printer Paper

DESI Computer Paper Facemats, Printer Paper and Software for PREMIER® Series 7000 Phones

Create your own custom telephone facemats with DESI Software and computer printer facemats for PREMIER Series 7000 phones.

PREMIER

Item No.	Mfg. Part No.	Description
4610037501	7030 FACEMAT PAPER	DESI Facemats for PREMIER 7030/7150 Pkg/100
4610737501	7155/7015 PAPER MAT	DESI Facemats for PREMIER 7155 Pkg/100
0000117845	7155H PAPER MAT	DESI brand perforated blank paper Facemat pages for printer for SPG Series 7000 single-line phone PREMIER model 7155H with 5 horizontal memory buttons pkg of 100 mats natural paper color
4610047501	7260 FACEMAT PAPER	DESI Facemats for PREMIER 7260 Pkg/100
4610707501	7275 FACEMAT PAPER	DESI Facemats for PREMIER 7275 Pkg/100
4610637501	7270 FACEMAT PAPER	DESI Facemats for PREMIER 7270 Pkg/100
4610747501	SERIES 7000 BACKERS	Backer Sheets For DESI Brand Custom Facemat Paper - 25 Per Pack
4610057501	S7K DESIGNATION TABS	DESIGNATION Tabs For PREMIER Series 7000 Telephones 300 Per Pk
4610777501	S7K FACEMAT SOFTWARE	DESI Brand Custom Facemat Software For PREMIER Series 7000 Models And PREMIER 2500 Models

Plastic Facemat Overlays for PREMIER Series 7000 Phones

PREMIER

Item No.	Mfg. Part No.	Description
4615307501	NS-P-A007	Plastic Overlay 7010/7020/7050 - Pkg 50
4615327501	NS-P-A008	Plastic Overlay For 7030/7150 - Pkg 50
0000118232	NS-P-A023	Plastic Overlay For PREMIER Model 7155H - Pk/50
4610207501	NS-P-A017	Plastic Overlay For 7260 Pk/50
4610307501	NS-P-A019	Plastic Overlay For 7270 Pk/50

Series 7000



Replacement Plug-Plug Modular Line

Miscellaneous Replacement Parts for PREMIER® Series 7000 Phones

PREMIER

Item No.	Mfg. Part No.	Description
4508107501	NS-P-E038	Lithium Battery With Cover For Series 7000 Models With Memory
4691117501	NS-P-H029-88	Cradle Tab For 7000-Natural-Pk Of 25
4610617501	NS-P-H029-00	Cradle Tab For 7000-Black Pk/25
4695007501	NS-P-H030-88	Wall mount Bracket For 7000-Natural
4610627501	NS-P-H030-00	Wall mount Bracket For 7000-Black
4833517501	NS-P-E042	9 1/2" Silver Satin Line Cord For Series 7000 Phones - 4 Wire modular
4830007501	NS-P-A021	14ft Silver Satin Line Cord For Series 7000 2-Line Phone Modular
4661507501	NS-P-E040-88	12ft Handset Cord For 7000-Natural-4 Wire Modular
4661537501	NS-P-E041-88	25ft Handset Cord For 7000-Natural-4 Wire Modular

2500/2554



Double Gong Ringer for 2500 Desk Phones and Single Gong Ringer for 2554 Wall Phones

Gong Ringers for PREMIER 2500 Desk and 2554 Wall Phones

- Frequency 20-30 Hz
- Volume control

PREMIER

Item No.	Mfg. Part No.	Description
4811017501	NS-M001/A82-A1	Double Gong Ringer For PREMIER 2500 Desk Phone
4814017501	NS-M003	Single Gong Ringer For PREMIER 2554 Wall Phone

2500/2554



Electret Carbon Equivalent Transmitter for PREMIER 2500/2554 Phones

Replacement Transmitter and Receiver for PREMIER® 2500/2554 Phones



Plastic Transmitter Holder



Hearing Aid Compatible Receiver

PREMIER

Item No.	Mfg. Part No.	Description
0000174084	OZ-01	Transmitter - Electret Carbon Equivalent for PREMIER 2500 / 2554 Model Phones
4691997501	NS-P007	Modular Transmitter Holder For 2500/2554 Handset
4632227501	NS-E004/HHMR-80	Hearing Aid Compatible Receiver
4691917501	NS-E90	Modular Jack for Handset

PREMIER 2500 Desk and 2554 Wall Phone DTMF Replacement Dials



Standard Touch Tone Dial for 2500 Desk and 2554 Wall Phones



Touch Tone Dial for 2500 Desk Phone with Transfer Access (Flash) and Message Waiting

Industry standard DTMF generator, polarity guard, metro type white letters and numbers on gray button.

PREMIER

Item No.	Mfg. Part No.	Description
4670597501	NS-E002/84B	DTMF Dial Pad Assembly For Standard PREMIER 2500/2554 Phone Sets
4671847501	NS-E006	DTMF Dial Pad Assembly For PREMIER 2500 Desk Phone With Message Waiting
4671857501	NS-E007	DTMF Dial Pad Assembly For PREMIER 2500 Desk Phone With Transfer Access Feature
4671867501	NS-E005	DTMF Dial Pad Assembly For PREMIER 2500 Desk Phone With Transfer Access And Message Waiting Indicator
4672987501	NS-E018	DTMF Dial Pad Assembly For PREMIER 2554 Wall Phone With Transfer Access
4672977501	NS-E017	DTMF Dial Pad Assembly For PREMIER 2554 Wall Phone With Transfer Access And Message Waiting Indicator

2500/2554



Standard Network with Spacer
for 2500/2554 Phones

Replacement Network for PREMIER® 2500 Desk and 2554 Wall Phones

- Standard transmission network
- Extra terminals for application wiring
- Plastic holder optional

PREMIER

Item No.	Mfg. Part No.	Description
4631037501	NS-E001/V38203-A467	Network For 2500/2554 Sets With Spacer
4612567501	V38203-A467 NETWORK	Network For 2500/2554 Sets Less Spacer



PREMIER Hookswitch Assembly
for 2500 Desk Phone

Hookswitch Assembly for PREMIER 2500 Desk Phone

PREMIER

Item No.	Mfg. Part No.	Description
4617527501	NS-M004/A82-A6	Hookswitch Assembly For 2500 Set

2500/2554

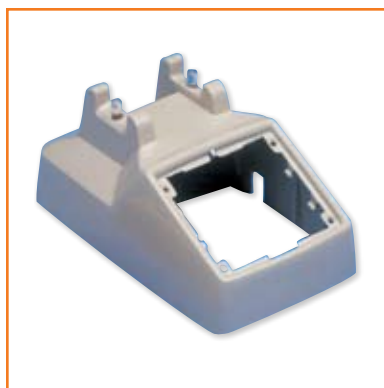


Plastic Cradle for 2554 Wall Phones

Replacement PREMIER® 2554 Miniwall Cradle with Plunger

PREMIER

Item No.	Mfg. Part No.	Description
4616577501	NS-P006-44	2554 Ash Plastic Cradle With Plunger+Screws
4616547501	NS-P006-00	2554 Black Plastic Cradle With Plunger+Screws
4616557501	NS-P006-09	2554 Ivory Plastic Cradle With Plunger+Screws
4616567501	NS-P006-15	2554 White Plastic Cradle With Plunger+Screws
4616587501	NS-P006-45	2554 Brown Plastic Cradle With Plunger+Screws
4616647501	NS-P006-47	2554 Red Plastic Cradle With Plunger+Screws



PREMIER Plastic Housings

Housings for PREMIER 2500 Desk Phones

PREMIER replacement parts are fully interchangeable. Housings are available in standard industry colors finished to a high gloss. PREMIER plastics are injection molded of ABS plastic.

PREMIER

Item No.	Mfg. Part No.	Description
4691817501	NS-P001-44	Ash Housing Plunger Assembly For 2500-Fm
4691357501	NS-P001-00	Black Housing Plunger Assembly For 2500s Fm
4691347501	NS-P001-13	Beige Housing Plunger Assembly For 2500-Fm
4691377501	NS-P001-09	Ivory Housing Plunger Assembly For 2500s Fm
4691387501	NS-P001-15	White Housing Plunger Assembly For 2500s Fm
4691417501	NS-P001-45	Brown Housing Plunger Assembly For 2500-Fm
4691887501	NS-P001-32	Gray Housing Plunger Assembly For 2500-Fm
4691877501	NS-P001-47	2500 Housing Plunger Assembly Red Fm-No Logo

2500/2554



Plastic Housings

Housings for PREMIER® 2554 Wall Phones

PREMIER replacement parts are fully interchangeable. Housings are available in standard industry colors finished to a high gloss. PREMIER plastics are injection molded of ABS plastic.

PREMIER

Item No.	Mfg. Part No.	Description
4693087501	NS-P005-44	Ash 2554 Housing Assembly-No Logo
4693027501	NS-P005-00	Black 2554 Housing Assembly-No Logo
4693017501	NS-P005-13	Beige 2554 Housing Assembly-No Logo
4693057501	NS-P005-09	Ivory 2554 Housing Assembly-No Logo
4693067501	NS-P005-15	White 2554 Housing Assembly-No Logo
4693097501	NS-P005-45	Brown 2554 Housing Assembly-No Logo
4693377501	NS-P005-32	Gray 2554 Housing Assembly-No Logo
4693417501	NS-P005-47	Red 2554 Housing Assembly-No Logo
0000118454	NS-P015-44	Ash Plastic Housing Assembly For 2554 No Dial Wall Phone Set
0000118455	NS-P015-47	Red Plastic Housing Assembly For 2554 No Dial Wall Phone Set



Plastic Faceplates for 2500 Desk Phones

Faceplates for PREMIER 2500 Desk Phones

PREMIER

Item No.	Mfg. Part No.	Description
4613597501	NS-P008-44	Ash Plastic Faceplate For 2500 Phone Set
4613517501	NS-P008-00	Black Plastic Faceplate For 2500 Phone Set
4613527501	NS-P008-13	Beige Plastic Faceplate For 2500 Phone Set
4613547501	NS-P008-09	Ivory Plastic Faceplate For 2500 Phone Set
4613627501	NS-P008-15	White Plastic Faceplate For 2500 Phone Set
4613617501	NS-P008-45	Brown Plastic Faceplate For 2500 Phone Set
4613667501	NS-P008-47	Red Plastic Faceplate For 2500 Phone Set
0000118456	NS-P018-44	Ash Plastic Faceplate For 2500 No Dial Desk Phone Set
0000118457	NS-P018-47	Red Plastic Faceplate For 2500 No Dial Desk Phone Set

2500/2554

Clear Faceplates for PREMIER® 2500 Phones

PREMIER

Item No.	Mfg. Part No.	Description
0000075527	NS-CLEAR FACEPL	Clear Faceplate - PREMIER 2500 Model Series
4610387501	NS-P009	Clear Faceplate With DESignation Tab For 2500
4615347501	NS-P010	Clear Faceplate For PREMIER Plus 2500 Models With Transfer Access Feature
4615357501	NS-P011	Clear Faceplate For PREMIER Plus 2500 Models With Message Waiting Indicator In Faceplate
4615367501	NS-P012	Clear Faceplate For PREMIER Plus 2500 Models With Transfer Access Feature And Message Waiting Indicator In Faceplate

DESI Brand Computer Printer Facemat Paper and Software for PREMIER 2500 Desk Phones

PREMIER

Item No.	Mfg. Part No.	Description
0000043368	14557	DESI Brand Facemat For PREMIER Model 2500 Basic Desk Telephone - Ash - 50 Per Package
0000043366	14555	DESI Brand Facemat For PREMIER Model 2500 Basic Desk Telephone - White - 50 Per Package
0000043367	14556	DESI Brand Facemat For PREMIER Model 2500 Basic Desk Telephone - Pewter - 50 Per Package
0000043374	14627	DESI Brand Facemat For PREMIER Model 2500 Desk Telephone With Message Waiting - Ash - 50 Per Package
0000043372	14625	DESI Brand Facemat For PREMIER Model 2500 Desk Telephone With Message Waiting - White - 50 Per Package
0000043373	14626	DESI Brand Facemat For PREMIER Model 2500 Desk Telephone With Message Waiting - Pewter - 50 Per Package
0000043377	14807	DESI Brand Facemat For PREMIER Model 2500 Desk Telephone With Flash - Ash - 50 Per Package
0000043375	14805	DESI Brand Facemat For PREMIER Model 2500 Desk Telephone With Flash - White - 50 Per Package
0000043376	14806	DESI Brand Facemat For PREMIER Model 2500 Desk Telephone With Flash - Pewter - 50 Per Package
0000043371	14562	DESI Brand Facemat For PREMIER Model 2500 Desk Telephone With Flash And Message Waiting - Ash - 50 Per Package
0000043369	14560	DESI Brand Facemat For PREMIER Model 2500 Desk Telephone With Flash And Message Waiting - White - 50 Per Package
0000043370	14561	DESI Brand Facemat For PREMIER Model 2500 Desk Telephone With Flash And Message Waiting - Pewter - 50 Per Package
0000044907	DESI PHONE STRIP C	DESI Brand Phone Number DESignation Strip For PREMIER Model 2500 Desk Telephone - Ash - 300 Per Package
0000044909	DESI PHONE STRIP W	DESI Brand Phone Number DESignation Strip For PREMIER Model 2500 Desk Telephone - White - 300 Per Package
0000044908	DESI PHONE STRIP P	DESI Brand Phone Number DESignation Strip For PREMIER Model 2500 Desk Telephone - Pewter - 300 Per Package
4610747501	SERIES 7000 BACKERS	Backer Sheets For DESI Brand Custom Facemat Paper - 25 Per Pack
4610777501	S7K FACEMAT SOFTWARE	DESI Brand Custom Facemat Software For PREMIER Series 7000 Models And PREMIER 2500 Models

2500/2554

Precut Paper Facemats for PREMIER® 2500 Desk Phones

PREMIER

Item No.	Mfg. Part No.	Description
4615567501	NS-A001-44	Ash Paper Facemat For Basic PREMIER 2500 Models
4615587501	NS-A002-44	Ash Paper Facemat For PREMIER Plus 2500 Models With Transfer Access Feature
4613147501	NS-A002-45 BRN MAT	Brown Paper Facemat For PREMIER Plus 2500 Models With Transfer Access Feature
4615577501	NS-A003-44	Ash Paper Facemat For PREMIER Plus 2500 Models With Message Waiting Indicator In Faceplate
4615597501	NS-A004-44	Ash Paper Facemat For PREMIER Plus 2500 Models With Transfer Access Feature And Message Waiting Indicator In Faceplate



Plastic Receiver and Transmitter Caps for PREMIER G-Style Handles

PREMIER Receiver and Transmitter Caps for G-Style Handsets

PREMIER

Item No.	Mfg. Part No.	Description
4601167501	NS-P004-44	Ash Receiver Cap For G-Type Handset
4601027501	NS-P004-00	Black Receiver Cap For G-Type Handset
4601017501	NS-P004-13	Beige Receiver Cap For G-Type Handset
4601077501	NS-P004-09	Ivory Receiver Cap For G-Type Handset
4601127501	NS-P004-15	White Receiver Cap For G-Type Handset
4601177501	NS-P004-45	Brown Receiver Cap For G-Type Handset
4601377501	NS-P004-32	Gray Receiver Cap For G-Type Handset
4601387501	NS-P004-47	Red Receiver Cap For G-Type Handset
4601667501	NS-P003-44	Ash Transmitter Cap For G-Type Handset
4601527501	NS-P003-00	Black Transmitter Cap For G-Type Handset
4601517501	NS-P003-13	Beige Transmitter Cap For G-Type Handset
4601577501	NS-P003-09	Ivory Transmitter Cap For G-Type Handset
4601627501	NS-P003-15	White Transmitter Cap For G-Type Handset
4601677501	NS-P003-45	Brown Transmitter Cap For G-Type Handset
4601987501	NS-P003-32	Gray Transmitter Cap For G-Type Handset
4601977501	NS-P003-47	Red Transmitter Cap For G-Type Handset

2500/2554

Miscellaneous Replacement Parts for PREMIER® 2500/2554 Phones

PREMIER

Item No.	Mfg. Part No.	Description
4612487501	2500-90VMW-F	Amber 90VDC Neon Message Waiting Lamp For PREMIER Plus 2500 Models With Message Waiting Indicator In Faceplate - 10 Per Pack
4616437501	NS-E009/P22201-99	Red 90VDC Neon Message Waiting Lamp Assembly With Leads For PREMIER 2500 Hotel/Motel Models With Beehive Message Waiting Indicator On Housing
0000075373	NS-RUBBER FEET	Rubber Foot - Repair Part For PREMIER 2500 Desk Telephone
7366217501	525 FUSE	Fuse 250V/750mA For PREMIER 2500/2554
4691917501	NS-E010	Replacement Modular Jack For 2500/2554 Handset



Plastic Hollow G-Style Handle and Receiver Volume Control Assembly for 2500/2554 Phones

PREMIER Hollow Handle with Volume Control for 2500/2554 Phones

Plastics are injection molded, durable ABS plastic. Available in standard industry colors in a high gloss finish. Modular cut-outs are in the handsets.

PREMIER

Item No.	Mfg. Part No.	Description
4610407500	VCHH-001-44	VC Hollow Handle With Wired Amp + Rj22 Ash
4610427500	VCHH-001-00	VC Hollow Handle With Wired Amp + Rj22 Black
4610467500	VCHH-0001-09	VC Hollow Handle With Wired Amp + Rj22 Ivory
4610507500	VCHH-001-15	VC Hollow Handle With Wired Amp + Rj22 White
4610537500	VCHH-001-47	VC Hollow Handle With Wired Amp+Rj22 Red

2500/2554



PREMIER Receiver Volume Control Handset Assembly

G-Style Handset Assemblies with Receiver Volume Control for PREMIER® 2500/2554 Phones

Industry standard DTMF generator, polarity guard, metro type white letters and numbers on gray button. It includes transmitter, receiver and 3-position H-M-L handset receiver volume control assembly.

PREMIER

Item No.	Mfg. Part No.	Description
4694107501	NS-P0026544-V	PREMIER Volume G-Handset Assembly No Logo Ash
4690017501	NS-P0026500-V	PREMIER Volume Control G-Handset Assembly No Logo Black
4694007501	NS-P0026513-V	PREMIER Volume G-Handset Assembly No Logo Beige
4694037501	NS-P0026509-V	PREMIER Volume G-Handset Assembly No Logo Ivory
4694047501	NS-P0026515-V	PREMIER Volume G-Handset Assembly No Logo White
4694077501	NS-P0026545-V	PREMIER Volume G-Handset Assembly No-Logo Brown
4694117501	NS-P0026532-V	PREMIER Volume G-Handset Assembly No Logo Gray
4694157501	NS-P0026547-V	PREMIER Volume G-Handset Assembly No Logo Red



Plastic G-Style Hollow Handle, no Volume Control

PREMIER Hollow Handle for G Style Handset (without Volume Control) , No logo, Modular

PREMIER

Item No.	Mfg. Part No.	Description
4694087501	NS-P002-44	Ash Hollow Handle G-Type-No Logo-Modular
4694027501	NS-P002-00	Black Hollow Handle G-Type No Logo Modular
4694017501	NS-P002-13	Beige Hollow Handle G-Type-No Logo-Modular
4694057501	NS-P002-09	Ivory Hollow Handle G-Type No Logo Modular
4694067501	NS-P002-15	White Hollow Handle G-Type No Logo Modular
4694097501	NS-P002-45	Brown Hollow Handle G-Type-No Logo-Modular
4694317501	NS-P002-47	Red Hollow Handle G-Type No-Logo Modular

2500/2554



Plastic Hollow G-Style Volume Control Handle

PREMIER® Hollow Handle for G-Style Volume Control Handset, No logo, Modular

PREMIER

Item No.	Mfg. Part No.	Description
4694087500	NS-P002-44-V	Volume Control Ash Hollow Handle G-Type-No Logo-Modular
4694027500	NS-P002-00-V	Volume Control Black Hollow Handle G-Type No Logo Modular
4694017500	NS-P002-13-V	Volume Control Beige Hollow Handle G-Type-No Logo-Modular
4694057500	NS-P002-09-V	Volume Control Ivory Hollow Handle G-Type No Logo Modular
4694067500	NS-P002-15-V	Volume Control White Hollow Handle G-Type No Logo Modular
4694317500	NS-P002-47-V	Volume Control Red Hollow Handle G-Type No-Logo Modular

Non-volume G-Style Handset Assemblies for Modular PREMIER 2500/2554 Phones

- Includes transmitter and holder with modular jack assembly, receiver, transmitter cap and receiver cap

PREMIER

Item No.	Mfg. Part No.	Description
4691027501	PT-P0026513 BEIGE	Beige Modular G Handset Assembly Less Cord
4691087501	PT-P0026544 ASH	Ash Modular G Handset Assembly Less Cord
4691077501	PT-P0026515 WHITE	White Modular G Handset Assembly Less Cord
4691097501	PT-P0026545 BROWN	Brown Modular G Handset Assembly Less Cord

Weatherproof Enclosure

PREMIER® Weatherproof Enclosure



PT-9700 Weatherproof Enclosure



PT-9700

The PREMIER PT-9700 weatherproof enclosure comes with a modular 630 telephone wall jack and hinged door that provides for a weatherproof seal to protect telecommunications equipment in harsh environments.

- Wall or pole mount (hardware not included)
- Great for outdoor use

PREMIER

Item No.	Mfg. Part No.	Description
4833587500	PT-9700	PT-9700 Weatherproof Enclosure With 630 Wall Jack

Handset Cords



Plug-to-Plug Handset Cords

PREMIER® Handset Cords - Plug to Plug

Four conductor modular handset cords for standard telephone sets.

- UL listed
- FCC part 68 compliant
- 4 position 4 conductor flipped wiring scheme

PREMIER

Item No.	Mfg. Part No.	Description
4661477501	PT-HCPP-4-06-AWH-UL	4P4C 6 Foot Antique White
4660327501	PT-HCPP-4-06-ASH	4P4C 6 Foot Ash
4660267501	PT-HCPP-4-06-BLK	4P4C 6 Foot Black
4660287501	PT-HCPP-4-06-IVY	4P4C 6 Foot Ivory
4660297501	PT-HCPP-4-06-WHT	4P4C 6 Foot White
4661487501	PT-HCPP-4-12-AWH-UL	4P4C 12 Foot Antique White
4660447501	PT-HCPP-4-12-ASH	4P4C 12 Foot Ash
4660387501	PT-HCPP-4-12-BLK	4P4C 12 Foot Black
4660417501	PT-HCPP-4-12-IVY	4P4C 12 Foot Ivory
4660427501	PT-HCPP-4-12-WHT	4P4C 12 Foot White
4661467501	PT-HCPP-4-25-AWH-UL	4P4C 25 Foot Antique White
4660777501	PT-HCPP-4-25-ASH	4P4C 25 Foot Ash
4660727501	PT-HCPP-4-25-BLK	4P4C 25 Foot Black
4660747501	PT-HCPP-4-25-IVY	4P4C 25 Foot Ivory
4660817501	PT-HCPP-4-25-CRD	4P4C 25 Foot Red
4660757501	PT-HCPP-4-25-WHT	4P4C 25 Foot White



Spade-to-Spade Handset Cords

PREMIER Handset Cords - Spade to Spade

Four conductor spade tipped handset cords for standard telephone sets.

- UL listed
- FCC part 68 compliant
- Includes eye-hook strain relief

PREMIER

Item No.	Mfg. Part No.	Description
4603087501	PT-HCSS-4-12-ASH	4 Conductor 12 Foot Ash
4603057501	PT-HCSS-4-12-IVY	4 Conductor 12 Foot Ivory
4602767501	PT-HCSS-4-25-ASH	4 Conductor 25 Foot Ash

Line Cords



Plug-to-Plug RJ31X Cords

PREMIER® Data Cords - Plug to Plug

Data cords are specially wired with straight through 1:1 polarity for security/alarm installations.

- UL listed
- FCC part 68 compliant
- 8 position 4 conductor to 6 position 4 conductor
- Equivalent to Lucent D8BA series

PREMIER

Item No.	Mfg. Part No.	USOC Codes	Description
8680007500	PT-DCPP-4-8/6-5-SS		8P4C to 6P4C Silver Satin 5 Foot
8681367503	PT-DCPP-8-03-SS	RJ31X	8P8C Silver Satin 3 Foot
8680737503	PT-DCPP-8-07-SS	RJ31X	8P8C Silver Satin 7 Foot
4362527503	PT-DCPP-8-14-SS	RJ31X	8P8C Silver Satin 14 Foot



Plug-to-Spade RJ31X Cords

PREMIER Data Cords - Plug to Spade

Plug to spade tipped data cords are for security/alarm installations.

- UL listed
- FCC part 68 compliant
- Includes eye-hook strain relief

PREMIER

Item No.	Mfg. Part No.	USOC Codes	Description
8680587503	PT-DCPS-4-07-SS	RJ31X	8P4C Silver Satin 7 Foot
8680817503	PT-DCPS-8-03-SS	RJ31X	8P8C Silver Satin 3 Foot
8680527503	PT-DCPS-8-07-SS	RJ31X	8P8C Silver Satin 7 Foot



Modular Interface Cord

PREMIER Interface Cord - Plug to Plug

This 8 inch interface cord is specially wired with straight through 1:1 polarity to interface two RJ11 or RJ14 modular jacks.

- UL listed
- FCC part 68 compliant

PREMIER

Item No.	Mfg. Part No.	Description
4804647501	PT-ICPP-4-8IN-SS	6P4C Silver Satin 8 Inch

Line Cords

PREMIER® Line Cords - Plug to Plug



Plug-to-Plug Line Cords

Four, six, and eight conductor modular line cords for standard telephone sets.



Plug-to-Plug Line Cords

- UL listed
- FCC part 68 compliant
- Flipped-wiring scheme

PREMIER

Item No.	Mfg. Part No.	Description
4660217501	PT-LCPP-4-07-CL	6P4C Clear 7 Foot
4660227501	PT-LCPP-4-14-CL	6P4C Clear 14 Foot
4660237501	PT-LCPP-4-25-CL	6P4C Clear 25 Foot
4660927501	PT-LCPP-4-02-SS	6P4C Silver Satin 2 Foot
4660077501	PT-LCPP-4-07-SS	6P4C Silver Satin 7 Foot
4660087501	PT-LCPP-4-14-SS	6P4C Silver Satin 14 Foot
4660097501	PT-LCPP-4-25-SS	6P4C Silver Satin 25 Foot
4661897501	PT-LCPP-6-25-CHAR	6P6C Charcoal 25 Foot
4661017501	PT-LCPP-6-07-SS	6P6C Silver Satin 7 Foot
4661027501	PT-LCPP-6-14-SS	6P6C Silver Satin 14 Foot
4661037501	PT-LCPP-6-25-SS	6P6C Silver Satin 25 Foot
4809767501	PT-LCPP-8-07-SS	8P8C Silver Satin 7 Foot
4809787501	PT-LCPP-8-25-SS	8P8C Silver Satin 25 Foot
4663737500	SP-DC-RJ14-DE-25	6P4C Round CAT 3 Line Cord F-Spec 25 Foot
4663777500	SP-DC-RJ14-DE-75	6P4C Round CAT 3 Line Cord F-Spec 75 Foot

Line Cords



Plug-to-Spade Line Cords

PREMIER® Line Cords - Plug to Spade

Four and six conductor plug to spade tipped line cords for standard telephone sets.

- UL listed
- FCC part 68 compliant
- Flipped-wiring scheme
- Includes eye-hook strain relief

PREMIER

Item No.	Mfg. Part No.	Description
4660047501	PT-LCPS-4-07-SS	6P4C Silver Satin 7 Foot
4660057501	PT-LCPS-4-14-SS	6P4C Silver Satin 14 Foot
4660067501	PT-LCPS-4-25-SS	6P4C Silver Satin 25 Foot
4661047501	PT-LCPS-6-07-SS	6P6C Silver Satin 7 Foot
4661057501	PT-LCPS-6-14-SS	6P6C Silver Satin 14 Foot
4661067501	PT-LCPS-6-25-SS	6P6C Silver Satin 25 Foot



Spade-to-Spade Line Cords

PREMIER Line Cords - Spade to Spade

Four conductor spade tipped line cords for standard telephone sets.

- UL listed
- FCC part 68 compliant
- Flipped-wiring scheme
- Includes eye-hook strain relief

PREMIER

Item No.	Mfg. Part No.	Description
4660147501	PT-LCSS-4-07-SS	6P4C Silver Satin 7 Foot
4660157501	PT-LCSS-4-14-SS	6P4C Silver Satin 14 Foot
4660167501	PT-LCSS-4-25-SS	6P4C Silver Satin 25 Foot

Line Cords



Telephone Line Cordage

PREMIER® Telephone Line Cordage

Stranded silver satin telephone line cordage is used to create custom-made line cords of any length.

- UL listed
- FCC part 68 compliant

PREMIER

Item No.	Mfg. Part No.	Description
4604747501	PT-LC-4F-500-SS	Stranded 4 Conductor Silver Satin 500 Foot Reel
4604767501	PT-LC-6F-500-SS	Stranded 6 Conductor Silver Satin 500 Foot Reel
4604847501	PT-LC-8C-500-SS	Stranded 8 Conductor Silver Satin 500 Foot Reel

PREMIER Plugs for Line Cords, Handset Cords, and Data Cords



4C / 6C / 8C Modular Plugs

Line cord, handset cord, and data cord plugs are for terminating stranded cordage.



Modular Plugs for Handset Cords

- UL listed
- FCC part 68 compliant

PREMIER

Item No.	Mfg. Part No.	Description
4604797501	PT-4P4C	Plug For Stranded Handset Cord 4P4C 25 Per Pack
4604757501	PT-6P4C	Plug For Stranded Line Cord 6P4C 25 Per Pack
4604777501	PT-6P6C	Plug For Stranded Line Cord 6P6C 25 Per Pack
4604787501	PT-8P8C	Plug For Stranded Line Cord 8P8C 25 Per Pack

Bells & Ringers

Bells



Loud Extension Bell

PREMIER® Bells

Loud ringing bells have a non-magnetic aluminum housing that protects two 6-inch gongs from all types of weather and environments. A mounting bracket is attached.

- Hard-wired telephone connections

PREMIER

Item No.	Mfg. Part No.	Description	Voltage Range	Frequency Range	Dimensions
4810317501	PT-101	Loud Extension Bell 95 dB 5900 Ohm Black	55 - 130 VAC	17 - 33 Hz	12.4"L x 5.4"W x 7.5"H
4810327501	PT-102	Loud Extension Bell 95 dB 1000/2650 Ohm Black	55 - 130 VAC	17 - 33 Hz	12.4"L x 5.4"W x 7.5"H



Loud Ringing Bell

PREMIER Ringers

Loud ringing bells are constructed with a highly durable plastic housing for indoor or outdoor use. It operates on telephone ringing voltage. This bell can be mounted on most flat surfaces. A water-tight plastic cover protects the ringer mechanism.

- Hard-wired telephone connections

PREMIER

Item No.	Mfg. Part No.	Description	Voltage Range	Frequency Range	Dimensions
4812417501	PT-75BA	Loud Ringing Bell 95 dB 1000/2650 Ohm Black	55 - 130 VAC	17 - 33 Hz	9.8"L x 5.2"W x 5.3"H
4812017501	PT-75BAR	Replacement Ringer Coil Assembly For PT-75BA Bell	55 - 130 VAC	17 - 33 Hz	9.8"L x 5.2"W x 5.3"H

Ringers



Bell Chime Ringer

PREMIER® Ringers

Bell Chime Ringers can function as a loud clear bell and with the flip of a switch can provide a pleasantly soft chime tone. For easy installation, the ringer is equipped with an external modular connection. The ringer operates off 55 to 130 VAC telephone ringing voltage and contains two 3-inch gongs for the chime effect. It provides volume control for the bell and chime, and is equipped with a 7 foot line cord.

- Modular line cord telephone connection

PREMIER

Item No.	Mfg. Part No.	Description	Voltage Range	Frequency Range	Dimensions
4811497501	PT-400	Bell Chime Ringer 75 dB 4600 Ohm With Volume Control And 7 Foot Cord Ivory	55 - 130 VAC	17 - 33 Hz	7.3"L x 5.2"W x 2.5"H



Extension Ringer

PREMIER Ringers

The 139 Extension Ringer is a two-gong, straight line extension ringer, featuring volume control and a double-wound coil for party identification. It is mounted on a steel base with a molded plastic cover.

- Hard-wired telephone connections

PREMIER

Item No.	Mfg. Part No.	Description	Voltage Range	Frequency Range	Dimensions
4812217501	PT-139	Extension Ringer 75 dB With Volume Control Beige	55 - 130 VAC	17 - 33 Hz	5.4"L x 5.2"W x 2.5"H