

Spirit® 2100 Portable Printing System



HellermannTyton's Spirit® 2100 portable printing system is easy to use and features "What You See Is What You Get" (WYSIWYG) label design and creation on a LCD screen that shows the outline of the label. Just type in the text (which is displayed on the screen), choose from several print sizes, and press the print button. It's that simple! The printer automatically detects the label and determines the proper size template for easy editing.

The Spirit 2100 provides fast, high quality, thermal transfer printing for permanent and highly legible label printing. The Spirit 2100 prints on many different types of label materials for wire, cable, and component marking. Self-laminating, white and metalized polyester, and tamper evident materials for calibration and security labeling are available for use with the Spirit system.

Material Data	
Printhead	203 dpi thermal transfer
Battery Charger	NiCad
Weight	2.5 lbs.
Shipping Weight (lbs)	7.5 lbs
Maximum Label Width	2.0"
Memory	68K SRAM, 128 Program Memory, 256K of non-volatile storage
Chargers	120V, 130V, 230V or 100V applications
LCD screen	2.0" x 1.5"
Operating Temperature	+40°F to +122°F (+4°C to +50°C)
Storage Temperature	-30°F to +160°F (-34°C to +71°C)

Product Features

- "What You See Is What You Get" (WYSIWYG) label design and creation. The label will print just like it looks on screen.
- Choose from normal or bold fonts to complete the label design appearance.
- Easily change text sizes: tiny, normal or large text
- Left, right, or center justify text
- Automatically centers text during label editing process.
- Easily import graphic images into the label design
- Print with popular bar code symbologies including Code 39, Code 128 and EAN.
- Vertical print option for patch panels, wall plates, terminal blocks and wire markers.
- Print serial numbers on labels with the "serial" text type. Spirit 2100 will automatically remember the last serial number printed the next time the saved label is used.
- The ribbon is longer than the industry standard which translates into fewer ribbon change-overs.
- Battery powered and a convenient hand strap makes the Spirit 2100 extremely portable and accessible. AC adapter also available.
- Label sizes and user interface upgradable in the field.
- Auto "fill" feature to copy one line of text to all other lines on the label.
- Download data files from Excel and other Windows compatible databases.
- Edit logging feature will keep track of printed labels and download printed information back to pc.



Product Selection				Description	Pkg. Qty.
Article No.	Part No.	Type			
557-00085	HT2100	HT2100		Portable Printing System includes: Spirit 2100 printer, HT2100 rechargeable battery and charger, ribbon cartridge, TAGH73-336, printer manual, CD-Rom tutorial, hard shell case, cleaning card, cleaning pen and Spiritlink computer interface software (interface software cable sold separately)	1

Use **Part No.** for ordering and **Type** for specification purposes.

Spirit® 2100 Portable Printing System *continued*

Label Loading

Each roll of labels is loaded onto a reusable spindle. Simply drop the label roll into the printer, pull the labels over the top (like loading film into a camera) and close the cover. No need to mechanically feed and align the labels.



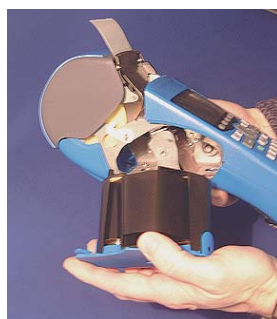
Spirit 2100 Accessories

Product Selection				
Article No.	Part No.	Type	Description	Pkg. Qty.
591-00076	BC10	BC10	Battery Charger	1
557-00002	2100CASE	2100CASE	Spirit Carrying Case	1
557-00004	2100CABLE	2100CABLE	SpiritLink interface cable.	1
557-00003	RBP1	RBP1	Battery Pack	1
557-00005	2100PEN	2100PEN	Cleaning Pen	1
557-00006	TS3003039	TS3003039	Spirit label Spindle Roll	1
557-00007	TS3003040	TS3003040	Spirit label Spindle cap	1
557-00008	2100CARD	2100CARD	Printhead cleaning card	1
591-00003	2100AC	2100AC	AC Adaptor	1

Use **Part No.** for ordering and **Type** for specification purposes.

Ribbon

The ribbon is supplied in a self-contained cartridge for easy loading. *One ribbon per package.*



Spirit Ribbons

Product Selection								
Article No.	Part No.	Type	Description	Width (W)		Height (H)		Pkg. Qty.
				In.	(mm)	In.	(mm)	
557-00009*	HHIGR	HHIGR	Replacement ribbon cartridge	2.0	(50.8)	2.50	(63.5)	131 ft (40 m)
557-00092	HHHST	HHHST	Ribbon cartridge	2.0	(50.8)	2.50	(63.5)	131 ft (40 m)
557-00075**	HHDTH	HHDTH	Replacement Durattach ribbon	2.0	(50.8)	2.50	(63.5)	131 ft (40 m)

Dimensions are approximate and subject to technical changes. Use **Part No.** for ordering and **Type** for specification purposes.

* HHIGR works on all materials

** HHDTHT can only be used with label materials that have the DTH extension. This provides superior performance to most chemicals and solvents.

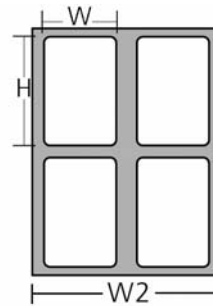
See page 144 for Spirit 2100 label selection

Spirit 2100 Labels

These labels are used for component marking. Self-laminating labels for wire and cable marking are also available, see pages 147.

See pages 140–141 for more information on label materials.

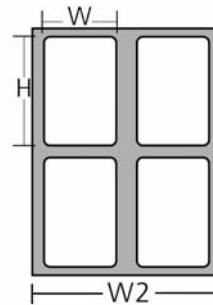
See pages 133–134 for information on the Spirit printer.



Product Selection											
Article No.	Part No.	Type	Drawing Reference	Color	Width (W)		Height (H)		Width of Liner (W2)		Pkg. Qty.
			(pages 146)		In.	(mm.)	In.	(mm.)	In.	(mm.)	
336 Material											
591-00095	TAGH70-336	TAGH70	A	White	.25"	(6.35)	.25"	(6.35)	.875"	(22.22)	750
557-00048	TAGH71-336	TAGH71	B	White	.5"	(12.7)	.435"	(11.1)	.875"	(22.22)	500
557-00110	TAGH096-3364	TAGH096	D	Yellow	.625"	(15.8)	.25"	(6.35)	.875"	(22.22)	500
557-00063	TAGHPP-336	TAGHPP	C	White	.875"	(15.87)	.333"	(8.45)	.874"	(22.22)	500
557-00076	TAGH13-336	TAGH13	D	White	.75"	(31.75)	.25"	(6.35)	.875"	(22.22)	750
557-00046	TAGH48-336	TAGH48	E	White	.8"	(20.32)	.5"	(12.7)	.925"	(23.49)	500
557-00042	TAGH16-336	TAGH16	F	White	.9"	(22.86)	.25"	(6.35)	1.025"	(26.03)	750
557-00039	TAGH14-336	TAGH14	G	White	1.0"	(25.4)	.375"	(9.5)	1.125"	(28.57)	500
557-00040	TAGH15-336	TAGH15	H	White	1.0"	(25.4)	.5"	(12.7)	1.125"	(28.57)	500
557-00041	TAGH15-3364	TAGH15	H	Yellow	1.0"	(25.4)	.5"	(12.7)	1.125"	(28.57)	500
557-00061	TAGH92-336	TAGH92	I	White	1.0"	(25.4)	.75"	(19.05)	2.125"	(53.97)	500
557-00054	TAGH85-336	TAGH85	J	White	1.25"	(31.7)	.25"	(6.35)	1.375"	(34.92)	750
557-00037	TAGH12-336	TAGH12	K	White	1.25"	(31.75)	.375"	(9.52)	1.375"	(34.92)	500
557-00043	TAGH17-336	TAGH17	L	White	1.5"	(38.1)	.25"	(6.35)	1.625"	(41.27)	750
557-00057	TAGH88-336	TAGH88	M	White	1.5"	(38.1)	.375"	(9.52)	1.625"	(41.27)	500
557-00059	TAGH90-336	TAGH90	N	White	1.5"	(38.1)	.5"	(12.7)	1.625"	(41.27)	500
557-00060	TAGH90-3364	TAGH90	N	Yellow	1.5"	(38.1)	.5"	(12.7)	1.625"	(41.27)	500
557-00044	TAGH27-336	TAGH27	O	White	1.5"	(38.1)	.75"	(19.05)	1.625"	(41.27)	500
557-00062	TAGH94-336	TAGH94	P	White	1.5"	(38.1)	1.25"	(31.75)	1.625"	(41.27)	250
557-00058	TAGH89-336	TAGH89	Q	White	1.75"	(44.45)	.375"	(9.52)	1.87"	(44.45)	500
591-00117	TAGH98-336	TAGH98	R	White	1.9"	(48.26)	.375"	(9.52)	2.025"	(51.43)	250
557-00055	TAGH86-336	TAGH86	S	White	2.0"	(50.8)	.25"	(6.35)	2.125"	(53.97)	750
557-00045	TAGH35-336	TAGH35	T	White	2.0"	(50.8)	.375"	(9.52)	2.125"	(53.97)	500
557-00064	TAGH96-336	TAGH96	U	White	2.0"	(50.8)	.396"	(10.05)	2.125"	(53.97)	750
557-00049	TAGH73-336	TAGH73	W	White	2.0"	(50.8)	1.0"	(25.4)	53.97"	(2.125)	250
557-00099	TAGH73-3363	TAGH73	W	Orange	2.0"	(50.8)	1.0"	(25.4)	53.97"	(2.125)	250
557-00050	TAGH73-3364	TAGH73	W	Yellow	2.0"	(50.8)	1.0"	(25.4)	53.97"	(2.125)	250
557-00100	TAGH73-3365	TAGH73	W	Green	2.0"	(50.8)	1.0"	(25.4)	53.97"	(2.125)	250
557-00101	TAGH73-3362	TAGH73	W	Red	2.0"	(50.8)	1.0"	(25.4)	53.97"	(2.125)	250
557-00102	TAGH73-3366	TAGH73	W	Blue	2.0"	(50.8)	1.0"	(25.4)	53.97"	(2.125)	250
557-00051	TAGH75-336	TAGH75	V	White	2.0"	(50.5)	.625"	(15.87)	2.125"	(53.97)	500
557-00052	TAGH75-3364	TAGH75	V	Yellow	2.0"	(50.5)	.625"	(15.87)	2.125"	(53.97)	500
557-00066	TAGHTP-336	TAGHTP	Y	White	333"	(8.45)	444"	(11277)	1.125"	(28.57)	11.25

Dimensions are approximate and subject to technical changes. Use **Part No.** for ordering and **Type** for specification purposes.

Spirit 2100 Labels *continued*



Product Selection											
Article No.	Part No.	Type	Drawing Reference (page 146)	Color	Width (W)		Height (H)		Width of Liner (W2)		Pkg. Qty.
					In.	(mm.)	In.	(mm.)	In.	(mm.)	
409 Material											
557-00029	TAGH15-409	TAGH15	H	White	1.0"	(25.4)	.5"	(12.7)	1.125"	(28.57)	500
557-00030	TAGH92-409	TAGH92	I	White	1.0"	(25.4)	.75"	(19.05)	1.125"	(28.57)	500
799 Material											
557-00035	TAGH92-799	TAGH92	I	Silver-matte	1.0"	(25.4)	.75"	(19.05)	2.125"	(53.97)	500
557-00034	TAGH90-799	TAGH90	N	Silver-matte	1.5"	(38.1)	.5"	(12.7)	1.625"	(41.27)	500
557-00031	TAGH27-799	TAGH27	O	Silver-matte	1.5"	(38.1)	.75"	(19.05)	1.625"	(41.27)	500
557-00036	TAGH94-799	TAGH94	P	Silver-matte	1.5"	(38.1)	1.25"	(31.75)	1.625"	(41.27)	250
557-00065	TAGH96-799	TAGH96	U	Silver-matte	1.875"	(47.62)	.25"	(6.35)	2.0"	(50.8)	750
557-00033	TAGH75-799	TAGH75	V	Silver-matte	2.0"	(50.8)	.625"	(15.87)	2.125"	(53.97)	500
557-00032	TAGH73-799	TAGH73	W	Silver-matte	2.0"	(50.8)	1.0"	(25.4)	53.97"	(2.125)	250
840 Material											
557-00093	TAGH27-840	TAGH27	O	White	1.5"	(38.1)	.75"	(19.05)	1.625"	(41.27)	500
843 Material											
556-00094	TAGH27-843	TAGH27	O	White	1.5"	(38.1)	.75"	(19.05)	1.625"	(41.27)	500
DTH Material											
557-00072	TAGH28-DTH	TAGH28	X	White	.8"	(20.3)	1.437"	(36.49)	.925"	(23.4)	250
557-00070	TAGH90-DTH	TAGH90	N	White	1.5"	(38.1)	.5"	(12.7)	1.625"	(41.27)	500
557-00069	TAGH75-DTH	TAGH75	V	White	2.0"	(50.8)	.625"	(15.87)	2.125"	(53.97)	500
557-00071	TAGH73-DTH	TAGH73	W	White	2.0"	(50.8)	1.0"	(25.4)	53.97"	(2.125)	250

Spirit 2100 Labels *continued*

(Not shown to scale)



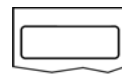
TAGH70-336
A



TAGH71-336
B



TAGHPP-336
C



TAGH13-336, TAGH096-3364
D



TAGH48-336
E



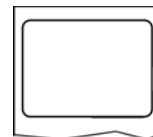
TAGH16-336
F



TAGH14-336
G



TAGH15-409, TAGH15-336
TAGH15-3364
H



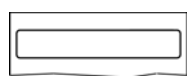
TAGH92-336, TAGH92-409, TAGH92-799
I



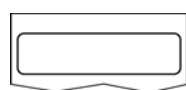
TAGH85-336
J



TAGH12-336
K



TAGH17-336
L



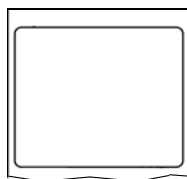
TAGH88-336
M



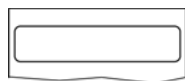
TAGH90-336, TAGH90-3364,
TAGH90-799, TAGH90-DTH
N



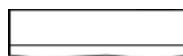
TAGH27-336, TAGH27-799,
TAGH27-840, TAGH27-843
O



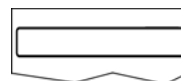
TAGH94-336,
TAGH94-799
P



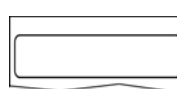
TAGH89-336
Q



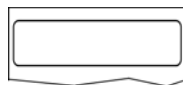
TAGH98-336
R



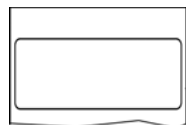
TAGH86-336
S



TAGH35-336
T



TAGH96-336,
TAGH96-799
U



TAGH75-336, TAGH75-3364,
TAGH75-799, TAGH75-DTH
V



TAGH73-336, TAGH73-3362,
TAGH73-3363, TAGH73-3364,
TAGH73-3365, TAGH73-3366,
TAGH73-799, TAGH73-DTH
W



TAGH28-DTH
X

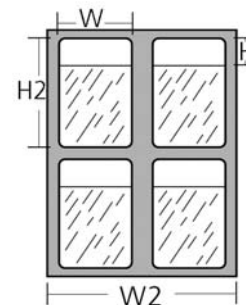


TAGHTP-336
Y

Spirit 2100 Self-Laminating Labels

Self-laminating labels are used for marking wire and cable. The clear overlap protects printed information.

See pages 140–141 for more information on label materials.

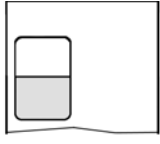


Product Selection													
Article No.	Part No.	Type	Drawing Reference (page 148)	Color	Width (W)		Height of Printable Area (H)		Height of Label (H2)		Width of Liner (W2)		Pkg. Qty.
					In.	(mm.)	In.	(mm.)	In.	(mm.)	In.	(mm.)	
100 Material													
557-00026	TAGH26-100	TAGH26	A	White	.5"	(12.7)	.35"	(8.8)	.75"	(19.05)	.875"	(22.22)	500
557-00011	TAGH2-100	TAGH2	B	White	.5"	(12.7)	.5"	(12.7)	1.435"	(36.5)	.875"	(22.22)	250
557-00012	TAGH2-1004	TAGH2	B	Yellow	.5"	(12.7)	.5"	(12.7)	1.435"	(36.5)	.875"	(22.22)	250
557-00025	TAGH25-100	TAGH25	C	White	.75"	(19.05)	.5"	(12.7)	1.75"	(44.45)	.875"	(22.22)	175
557-00027	TAGH51-100	TAGH51	D	White	1.0"	(25.4)	.35"	(8.8)	.75"	(19.05)	1.125"	(28.57)	500
557-00021	TAGH22-100	TAGH22	E	White	1.0"	(25.4)	.5"	(12.7)	1.435"	(36.5)	1.125"	(28.57)	250
557-00022	TAGH22-1004	TAGH22	E	Yellow	1.0"	(25.4)	.5"	(12.7)	1.435"	(36.5)	1.125"	(28.57)	250
557-00018	TAGH9-100	TAGH9	F	White	1.0"	(25.4)	.75"	(19.05)	2.25"	(57.1)	1.125"	(53.97)	100
557-00019	TAGH9-1004	TAGH9	F	Yellow	1.0"	(25.4)	.75"	(19.05)	2.25"	(57.1)	1.125"	(53.97)	100
557-00013	TAGH3-100	TAGH3	G	White	1.0"	(25.4)	1.0"	(25.4)	3.75"	(95.25)	1.125"	(28.57)	100
557-00023	TAGH23-100	TAGH23	H	White	1.0"	(25.4)	1.5"	(38.1)	7.437"	(188.89)	1.125"	(28.57)	50
557-00028	TAGH95-100	TAGH95	I	White	1.5"	(38.1)	1.0"	(25.4)	3.75"	(95.25)	1.625"	(41.25)	100
557-00010	TAGH1-100	TAGH1	J	White	1.9"	(48.26)	.75"	(19.05)	3.19"	(81.02)	2.025"	(51.43)	100
557-00024	TAGH24-100	TAGH24	K	White	2.0"	(50.8)	.5"	(12.7)	1.435"	(36.5)	2.125"	(53.97)	250
557-00020	TAGH10-100	TAGH10	L	White	2.0"	(50.8)	.75"	(19.05)	2.25"	(57.1)	2.125"	(53.97)	100
557-00015	TAGH6-100	TAGH6	M	White	2.0"	(50.8)	1.0"	(25.4)	3.75"	(95.25)	2.125"	(53.97)	100
557-00014	TAGH4-100	TAGH4	N	White	2.0"	(50.8)	1.5"	(38.1)	5.937"	(150.79)	2.125"	(53.97)	50

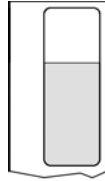
Dimensions are approximate and subject to technical changes. Use **Part No.** for ordering and **Type** for specification purposes.

Spirit 2100 Self-Laminating Labels *continued*

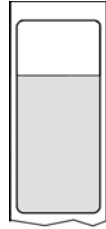
(Not shown to scale)



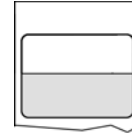
TAG26-100
A



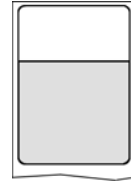
TAGH2-100,
TAGH2-1004
B



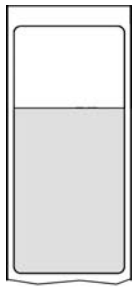
TAGH25-100
C



TAGH51-100
D



TAGH22-100,
TAGH22-1004
E



TAGH9-100,
TAGH9-1004
F



TAGH3-100
G



TAGH23-100
H



TAGH95-100
I



TAGH1-100
J



TAGH24-100
K



TAGH10-100
L



TAGH6-100
M



TAGH4-100
N