

CLASS **750H**

OCTAL STYLE HERMETICALLY SEALED RELAY

DPDT, 12 AMPS
3PDT, 10 AMPS

FEATURES

VACUUM BAKED & DRY NITROGEN FILLED

REMOVES CONTAMINANTS AND PROVIDES A CLEAN & DRY ATMOSPHERE FOR CONTACTS.

HERMETICALLY SEALED METAL ENCLOSURE

IDEAL FOR USE IN HAZARDOUS LOCATIONS. UL CERTIFIED FOR CLASS 1 DIVISION 2 GROUP A, B, C & D HAZARDS.

PLUG-IN STYLE MOUNTING

WHEN USED WITH 70-464-1 OR 70-465-1 SOCKETS, THE 750H CAN BE DIN RAIL MOUNTED OR PANEL MOUNTED.

BENEFITS

UL US
UL Recognized
File No. E43641

UL LISTED 367G
IND. CONT. EQ.
C US

WHEN USED WITH
SOCKETS
70-464-1 OR 70-465-1

CURRENT LIMITED TO
RATING OF RELAY OR
SOCKET WHICHEVER
IS LESS

GENERAL SPECIFICATIONS

COIL

Pull-in Voltage:	85% of nominal voltage or less for AC coils, 80% of nominal voltage or less for DC coils
Dropout Voltage:	10% of nominal voltage or more
Max. Voltage:	110%
Resistance:	±10% measured @ 25°C
Coil Power:	1.2 watts DC, 2 VA to 2.75 VA (60Hz) AC @ 25°C.
Max. Coil Dissipation:	3.0 watts DC @ 25°C.
Duty:	Continuous

CONTACTS

Contact Material:	Silver alloy, gold flashed
Contact Rating:	10 amps, 120 VAC. 6 amps, 240 VAC 50/60Hz for 3 pole 12 amps, 120 VAC. 8 amps, 240 VAC 50/60Hz for 2 pole 1/3Hp 120 VAC, 1/2Hp 240 VAC. 10 amps, 30 VDC
Contact Resistance:	50 milliohms max. Initial at rated current

TIMING

Operate Time:	15 mS max @ nominal voltage
Release Time:	10 mS max @ nominal voltage

DIELECTRIC STRENGTH

Contacts to Coil:	1250 V rms
Across open Contacts:	500 V rms
Pole to Pole:	1250 V rms
Contacts to Frame:	1250 V rms
Insulation Resistance:	1000 megohms min. @ 500 VDC

TEMPERATURE

Operating:	-45°C to +55°C. (AC) -45°C to +70°C. (DC)
Storage:	-45°C to +105°C

VIBRATION RESISTANCE

Functional:	6 g's, 10 to 55Hz (double amplitude)
-------------	--------------------------------------

SHOCK RESISTANCE

Functional:	5 g's
Mechanical:	20 g's

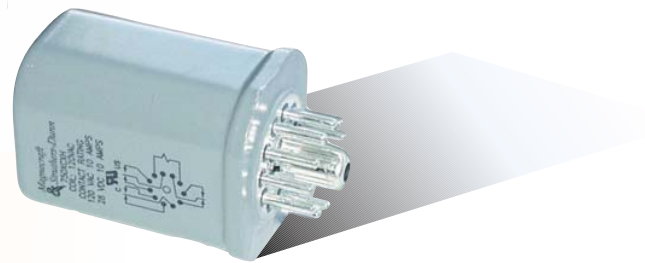
LIFE EXPECTANCY

Electrical:	100,000 operations @ rated resistive load
Mechanical:	5,000,000 operations @ no load

MISCELLANEOUS

Operating Position:	Any
Insulation Material:	Molded plastic
Enclosure:	Grey metal case, hermetically sealed
Weigh:	130 grams approx.

UL GROUPS A, B, C & D CERTIFIED
CLASS 1 DIVISION 2 FOR
HAZARDOUS LOCATIONS



Mating Sockets
70-750D8-1, 70-750D11-1,
70-464-1, 70-465-1: SCREW/DIN
70-169-1, 70-170-1: SCREW/PANEL
See Section 8, page 7 - 12



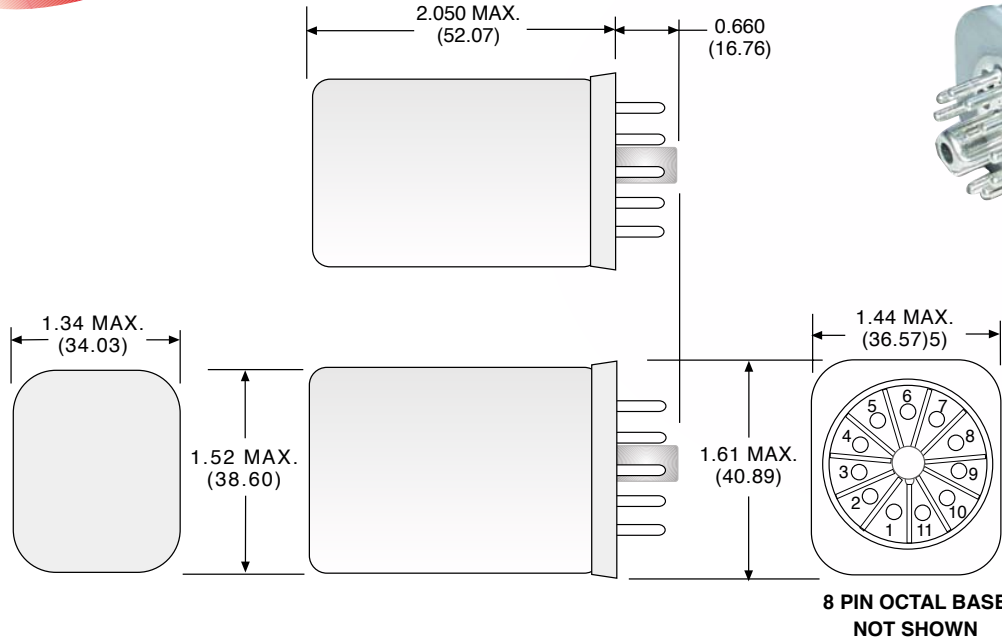
CLASS **750H**

OCTAL STYLE HERMETICALLY SEALED RELAY

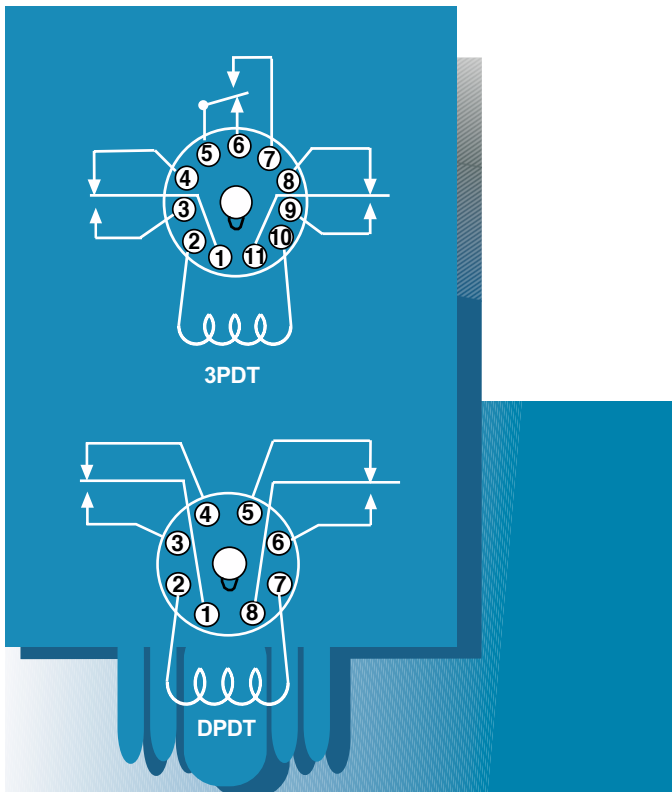
DPDT, 12 AMPS
3PDT, 10 AMPS

NEW
From The Market
Leader in Industrial
Relays

OUTLINE DIMENSIONS
DIMENSIONS SHOWN IN INCHES & (MILLIMETERS).



WIRING DIAGRAMS
(VIEWED FROM PIN END)



STANDARD PART NUMBERS	CONTACT CONFIGURATION	COIL MEASURED @ 25°C	
		NOMINAL INPUT VOLTAGE	NOMINAL RESISTANCE (OHMS)
AC OPERATED - 8 PIN OCTAL, 12 AMP			
750XBXH-12A	DPDT	12 VAC, 50/60Hz	72 Ω
750XBXH-24A	DPDT	24 VAC, 50/60Hz	1,700 Ω
750XBXH-120A	DPDT	120 VAC, 50/60Hz	9,100 Ω
DC OPERATED - 8 PIN OCTAL, 12 AMP			
750XBXH-12D	DPDT	12 VDC	120 Ω
750XBXH-24D	DPDT	24 VDC	470 Ω
750XBXH-110D	DPDT	110 VDC	10,000 Ω
AC OPERATED - 11 PIN OCTAL, 10 AMP			
750XCXH-12A	3PDT	12 VAC, 50/60Hz	72 Ω
750XCXH-24A	3PDT	24 VAC, 50/60Hz	1,700 Ω
750XCXH-120A	3PDT	120 VAC, 50/60Hz	9,100 Ω
DC OPERATED - 11 PIN OCTAL, 10 AMP			
750XCXH-12D	3PDT	12 VDC	120 Ω
750XCXH-24D	3PDT	24 VDC	470 Ω
750XCXH-110D	3PDT	110 VDC	10,000 Ω